

5. 物料 PC 物料

6. 物料 EPS 物料

7. 物料: CE EN1078

物料规格:

物料: PC

物料: 物料 EPS 物料

物料: S/M(54-58cm);M/L(58-62cm)

物料: 220 g

物料: Pantone

物料: Heading 物料 物料 PA 物料 (物料)物料

物料规格:

| | |
|-------|------------------------------|
| 物料 物料 | AU B702 物料 物料 |
| 物料 | 物料 EPS 物料 & PC 物料 |
| 物料 | CE EN1078 |
| 物料 | 27 物料 |
| 物料 | 物料, 物料 |
| 物料/物料 | S/M(54-58cm);M/L(58-62cm) |
| 物料 | 220 g |
| 物料 | 7 物料 |
| MOQ | 300pcs |
| 物料 | PP 物料 + 物料 物料 + mastercarton |

物料 物料 物料:















| | | | | | |
|------------------|---------|---------|---------|---------|---------|
| NYLON WEBBING | | | | | |
| | PLA2001 | PLA2135 | PLA2008 | PLA2057 | PLA2191 |
| | | | | | |
| | PLA2081 | PLA2020 | PLA2242 | PLA2179 | PLA2106 |
| | | | | | |
| PLA2051 | PLA2012 | PLA2148 | PLA2304 | PLA2204 | |
| | | | | | |
| PLA2034 | PLA2041 | PLA2273 | PLA3880 | | |

| | | | | | |
|--|--|--|--|--|-----------------|
| | | | | | LOGO STICKER |
| | | | | | |
| | | | | | |
| | | | | | |

| | | | | | | |
|--------|---------|------------|------------|------------|---------|---------|
| LINING | | | | | | |
| | PLA6000 | PLA6010-10 | PLA6211-02 | PLA6325-08 | PLA6317 | PLA6520 |

| | | | | | | |
|----------------|------|------|------|------|------|------|
| DIVIDER (1) | | | | | | |
| | -111 | -36 | -116 | -119 | -00 | -120 |
| DIVIDER (2) | | | | | | |
| | -01 | -07 | -107 | -114 | -36 | -111 |
| | | | | | | |
| | -116 | -106 | -117 | -113 | -105 | -110 |
| | | | | | | |
| -00 | -115 | -109 | -112 | -104 | | |

| | | | | | | |
|------|------|------|------|------|-----|-----------------|
| | | | | | | STRAP BUCKLE |
| -114 | -36 | -107 | -07 | -106 | -01 | |
| | | | | | | |
| -113 | -104 | -117 | -115 | -116 | -00 | |
| | | | | | | |
| -112 | -111 | -109 | | | | |

| | | | | | | |
|--------|------|------|------|------|--------|------|
| BUCKLE | | | | | | |
| | -105 | -106 | -01 | -107 | -07 | -114 |
| | | | | | | |
| -110 | -104 | -116 | -117 | -106 | -112 | |
| | | | | | | |
| -115 | -111 | -00 | -109 | ITW | MAGNET | |

| | | | | | |
|--------------------|------------|---------|------------|------------|---------|
| SIZE ADJUSTMENT | | | | | |
| | PLA5022 | PLA5073 | PLA5285 | PLA5406 | PLA5663 |
| | | | | | |
| PLA5058 | PLA5127-00 | PLA5127 | PLA5388-13 | PLA5388-01 | |

| | | | | | |
|------------|------------|------------|-------------|------------|-------|
| | | | | | VISOR |
| PLA1213-00 | PLA1213 | PLA0481-18 | PLA0481 | PLA0083-09 | |
| | | | | | |
| PLA0267 | PLA0267-07 | PLA0872A | PLA0872-113 | PLA0083 | |

Helmet Shape 101

Introduction:

Understanding helmet shapes is crucial for ensuring a proper fit and maximum protection.

Key Concepts:

There are three primary helmet shapes: European (Oval), Generic (Intermediate), and Asian (Round).

European Headform:

This helmet shape is designed for a rider's head with a dimension which is considerably longer front-to-back than its side-to-side measurement.

Helmet Shape 101



European Headform

An Oval shaped helmet is designed for a rider's head with a dimension which is considerably fit for Europeans.

Generic headform

A generic headform helmet is designed for a rider's head with a dimension which is slightly longer front-to-back than its side-to-side measurement.

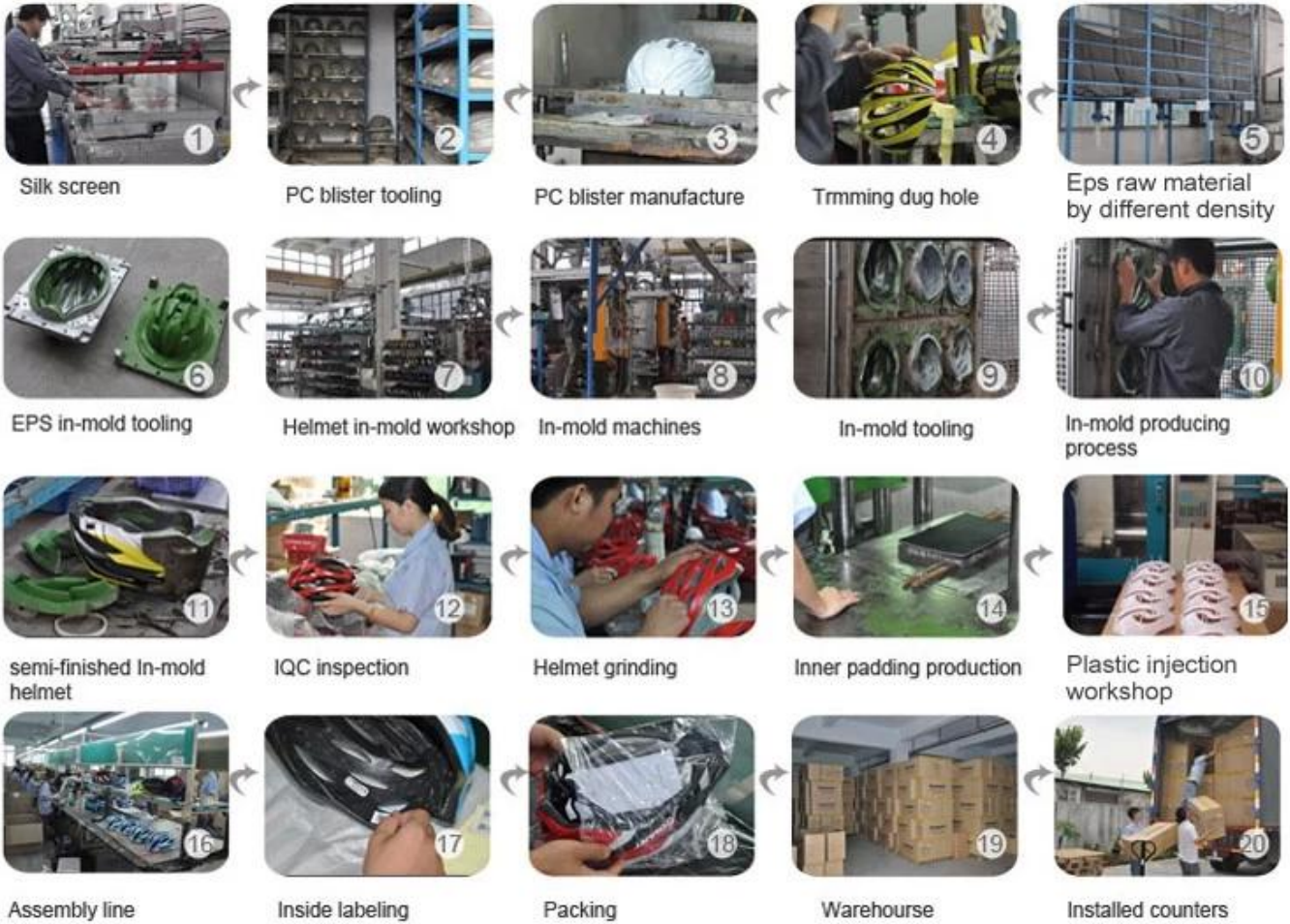
Asian headform

A Round shaped helmet is designed for a rider's head with a dimension which is considerably fit for Asians.

Conclusion

Choosing the right helmet shape is essential for safety and comfort. Always ensure a proper fit and use your helmet correctly.

Production Procedure



□□□□□□

□□□□□□□□□□□□

□□: □□□□□□□□□□□□□□□□□□

OEM & ODM: □□□□□□ OEM □□□ ODM □□□□□□□□□□□□□□

R & D □□□: □□□□□□□□□□□ □□□□□□□ □□□□□□□

□□: □□ □□□□□□□□□□□□□□□□□□□□□□□□□□□□□□□□□□

□□: □□ □□□□□□□□□□□□□□□□

-□□□□□: □□□□□□□□ □□□□□, □□□□□□□□□

PAYMENT

- We accept T/T ,Western Union or Paypal before production
- If buyers have any problems about payment , please contact us ASAP



SHIPPING

- 3-15 working days since payment receipt (based on actual quantity)
- Tracking No. will be sent to you after delivery . And you will get every important shipping status by email.

