

ANSI Z89.1 certified hard hat, hiGh quality PPE safest helmetet for construction AU-M12



SAFETY HARD HAT



High Impact
ABS



Size Adjustment
55-62 cm



Ventilation
Breathable

Model NO.	AU-M12 Security Helm
External material	ABS/PP sleeve
Inner material	EPS coating, 4/6 points Webbing Suspension system
Headband	SPORT Polyethylene
Lamp Carry System	External nylon 6.6 Lamp Clips
EarMuffs	30-35dB NRR Hear Protection
Face mask	PC plastic Vistier/ PC plastic Goggle/ iron Mesh fabric
Color	Red, Yellow, blue, green, orange, black, white, pink
Size/head Scope	55-62cm
Weight	550 g (Ear Muffs and eye protection Are not included)
Ventilation slots	8 air ventilation with Aluminum/ nylon Mesh fabric
technology	injection
Certification	ANSI Z89.1
sample Time	3-7 Work Day
Minimum Order Quantity	200 pcs

Packaging detail	1.PP Bag, SPORT Bag, bladder Map, Color Crate and Custom design is welcomed.
	2. Cardboard Packaging outside

:

1) Safety helmet with LED light : Headlight LED light.

2) Safety helmet with hearing protection and mesh face shields : Earmuffs good sound insulation, Face protection Iron mesh.

3) Safety helmet with plastic visor The set is compatible with ours special visor and earmuffs : Visor Plastic with an eye Protection, Earmuffs .



Iron mesh faceshield
EN 1731



EN 166
ANSI Z87.1



Noiseproof earmuff
EN 352-3:2002



New deve loped clear visor
EN266



Versatile LED headlight 3A
EN 61547:2009



Versatile LED headlight 1A
EN 55015: 2006

The detailed pictures of the safety helmet:











:

Energy production, iron Tower, BTS station, extract coal, Work at heights, Petrochemical refine , offshore oil and gas, plumbing, cable car maintenance, Mobile system maintenance, Aircraft maintenance, pulp and paper, Civil infrastructure, sea rescue, Roof cleaning, Hike ...



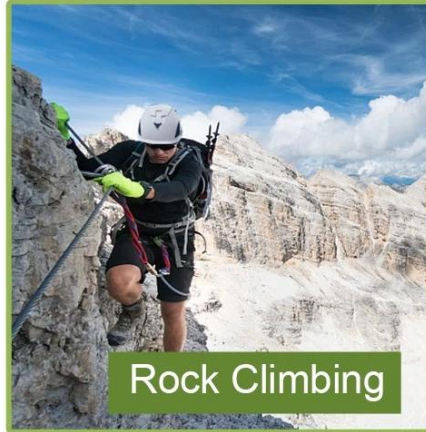
Safety Helmet



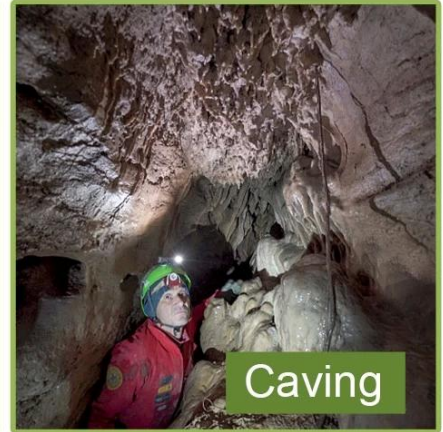
Tree Care



Construction



Rock Climbing



Caving



Work-at-height



Sea Rescue

Knowing the head circumference of a safety helmet:

European head shape:

An oval helmet is designed to fit a rider's head and has a considerable fit for Europeans.

Generic head shape:c

A general headform helmet is designed to fit a rider's head and has a front-to-back dimension that is slightly longer than the side dimension.

Asian head shape:

A round helmet is designed to fit a rider's head and is a comfortable size fit for Asians.

Helmet Shape 101



European Headform

An Oval shaped helmet is designed for a rider's head with a dimension which is considerably fit for Europeans.

Generic headform

A generic headform helmet is designed for a rider's head with a dimension which is slightly longer front-to-back than its side-to-side measurement.

Asian headform

A Round shaped helmet is designed for a rider's head with a dimension which is considerably fit for Asians.

Our test laboratory:

To make high-quality helmets, we not only learn from design theory, but also make progress from test results! That's why our factory is equipped with a professional testing laboratory to ensure every design is practical and accessible! Our testing standard is stricter than the corresponding certificate requirements, so we can promise that the model we provide can definitely pass the corresponding third-party test!

Our In-house Testing Lab



Certification:

Below is our certificate: We have ISO9001, patent letters, CE documents and we have our own laboratory to ensure that each of our products can meet the testing requirements

CERTIFICATE



Our factory's profile:

Aurora Sports is a helmet manufacturer with more than 15 years of experience in producing all kinds of helmets. Internal design and research and development teams with many years of experience enable Aurora Sports to respond quickly to demanding requirements and create complete programs and collections from scratch with strict quality standards.

CUSTOMIZE FOR BRAND



Logo style: Dome, Metal, UV-Dart sticker, Water decal.



The helmet manufacturing procedure is as follows:

screen printing → PC blister tools → Production of PC blisters → Trim excavated hole → EPS raw material with different density → EPS in-mold tool → Helmet-in-mold workshop → In-mold machines → In-mold tools → In-mold manufacturing process → Semi-finished in-mold helmet → IQC inspection → Helmet grinds → Production of the interior upholstery → Plastic injection molding workshop → assembly line → Interior labeling → Packaging → camp → installed meters.

Production Procedure



Silk screen



PC blister tooling



PC blister manufacture



Trimming dug hole



Eps raw material
by different density



EPS in-mold tooling



Helmet in-mold workshop



In-mold machines



In-mold tooling



In-mold producing
process



semi-finished In-mold
helmet



IQC inspection



Helmet grinding



Inner padding production



Plastic injection
workshop



Assembly line



Inside labeling



Packing



Warehouse



Installed counters

Express delivery:

International express, air freight and sea transport can be easily organized here! You can choose any transport you want and we will do our best to help you! We have already established a long-term relationship with various shipping companies and freight forwarders. All our efforts are aimed at providing you with the best shipping experience! Choose us, it will be easy for you to keep your helmets safe at all times!

SHIPPING

