

Quick Details

- Place of Origin: Guangdong, China (Mainland)
- Brand Name: Aurora
- Model Number: AU-S03
- Material: EPS+ABS
- Sport: Skiing
- Best use: Snow sport
- Item: Customized design snowboarding helmet ski helmet cover
- Size: S/M(54-58CM);M/L(58-62CM)
- Color: pantone
- Air vents: 10
- technology: Injection
- MOQ: 300PCS
- Printing: offset printing
- Certificate: CE EN 1078
- Weight: 475g

Packaging & Delivery

High Quality Matt Cerulean best ski helmets Customized design ski helmet cover with CE approved

Packaging Details: 1. PP bag, PVC bag, Blister card, color box and custom-design are welcome;
2. Carton packing outside
Customized design ski ski helmet covers helmet cover

Our Services

We accept OEM orders for all our helmets production lines, including client's logos and labels. After many years of exploration and development, we are sure we can meet all your requirements:

1, customized design.

2, customized size & colors & patterns.

3, customized logo.

4, customized color box packaging.

5, customized stickers.

6, customized hang tag, manual, PE bag, plastic part of buckle.

specification

Model No.

High Quality Matt Cerulean Customized design ski helmet cover with CE approved

Material:	EPS, ABS Customized design ski helmet cover
Inner material:	Hight Density EPS(expanded polystyrene)
External material:	ABS (polycarbonate) shell
Technology:	Injection Customized design ski helmet cover
Certification:	Certified by CPSC / CE / TÜV-GS / Snell / ASTM / REACH- Safe and Reliable
Best Use:	snow sport, skiing
Gender :	Unisex
Style:	Customized design ski helmet cover
Vents:	10
Color:	PANTONE
Head Circumference	S/M(54-58CM);M/L (58-62CM)
Net Weight:	475g
MOQ	300 PCS
Sample Time	3-5 days
Bulk lead time	Within 35 days after samples confirmed and deposit received
Packing detail	1. PP bag, PE bag, Blister card, color box and custom-design is welcomed. 2. Carton packing outside
Payment terms	L/C,T/T,Western Union
Supply ability	600,000pcs/Month
Main markets	Europe, America, Canada
Our international quality standards:	ASTM F1447-06 ASTM F1952-09 ASTM F1492-08 ASTM F1898-08 ASTM F1163-04a ASTM F2040-11 ASTMF1045-2007 CPSC 1203 BS EN1078:2012 BS EN1080:1997+A1:2002+A2:2005 BS EN1384:1997+A1:2002 BS EN1077:2007 BS EN1385-1998+A1:2005 EN ISO10256:2003 AS/NZS2063-2008+A1:2009 AS/NZS3838:2006
Our strength:	1. Full sets of Testing Certificate 2. Fast making the sample 3. Good price with first class quality 4. Durable and long time service life 5. High effect for protection 6. Delivery on time.

Pictures:







So far, we have been manufacturing & exporting different kinds of helmets for more than 24 years. You can purchase latest design quality helmets here as well as personalize your own designs since we can provide a strong R&D support. We provide different options for custom service that you can select the different helmet color, different strap color, LOGO custom service, inner pad design, divider color, different strap buckle color, and we can provide different head adjusters even different colors for visors.

NYLON WEBBING					
	PLA2001	PLA2135	PLA2008	PLA2057	PLA2191
	PLA2081	PLA2020	PLA2242	PLA2179	PLA2106
PLA2051	PLA2012	PLA2148	PLA2304	PLA2204	
PLA2034	PLA2041	PLA2273	PLA3880		

					LOGO STICKER

LINING						
	PLA6000	PLA6010-10	PLA6211-02	PLA6325-08	PLA6317	PLA6520

DIVIDER (1)						
	-111	-36	-116	-119	-00	-120
DIVIDER (2)						
	-01	-07	-107	-114	-36	-111
	-116	-106	-117	-113	-105	-110
-00	-115	-109	-112	-104		

	-114		-36		-107		-07		-106		-01
	-113		-104		-117		-115		-116		-00
	-112		-111		-109						

BUCKLE						
	-105	-106	-01	-107	-07	-114
-110	-104	-116	-117	-106	-112	
-115	-111	-00	-109	ITW	MAGNET	

SIZE ADJUSTMENT					
	PLA5022	PLA5073	PLA5285	PLA5406	PLA5663
PLA5058	PLA5127-00	PLA5127	PLA5388-13	PLA5388-01	

					VISOR
PLA1213-00	PLA1213	PLA0481-18	PLA0481	PLA0083-09	
PLA0267	PLA0267-07	PLA0872A	PLA0872-113	PLA0083	

About our headform

European Headform:

An Oval shaped helmet is designed for a rider's head with a dimension which is considerably fit for Europeans.

Generic headform:

A generic headform helmet is designed for a rider's head with a dimension which is slightly longer front-to-back than its side-to-side measurement.

Asian headform:

A Round shaped helmet is designed for a rider's head with a dimension which is considerably fit for Asians.

Helmet Shape 101



European Headform

An Oval shaped helmet is designed for a rider's head with a dimension which is considerably fit for Europeans.

Generic headform

A generic headform helmet is designed for a rider's head with a dimension which is slightly longer front-to-back than its side-to-side measurement.

Asian headform

A Round shaped helmet is designed for a rider's head with a dimension which is considerably fit for Asians.

The Fit:

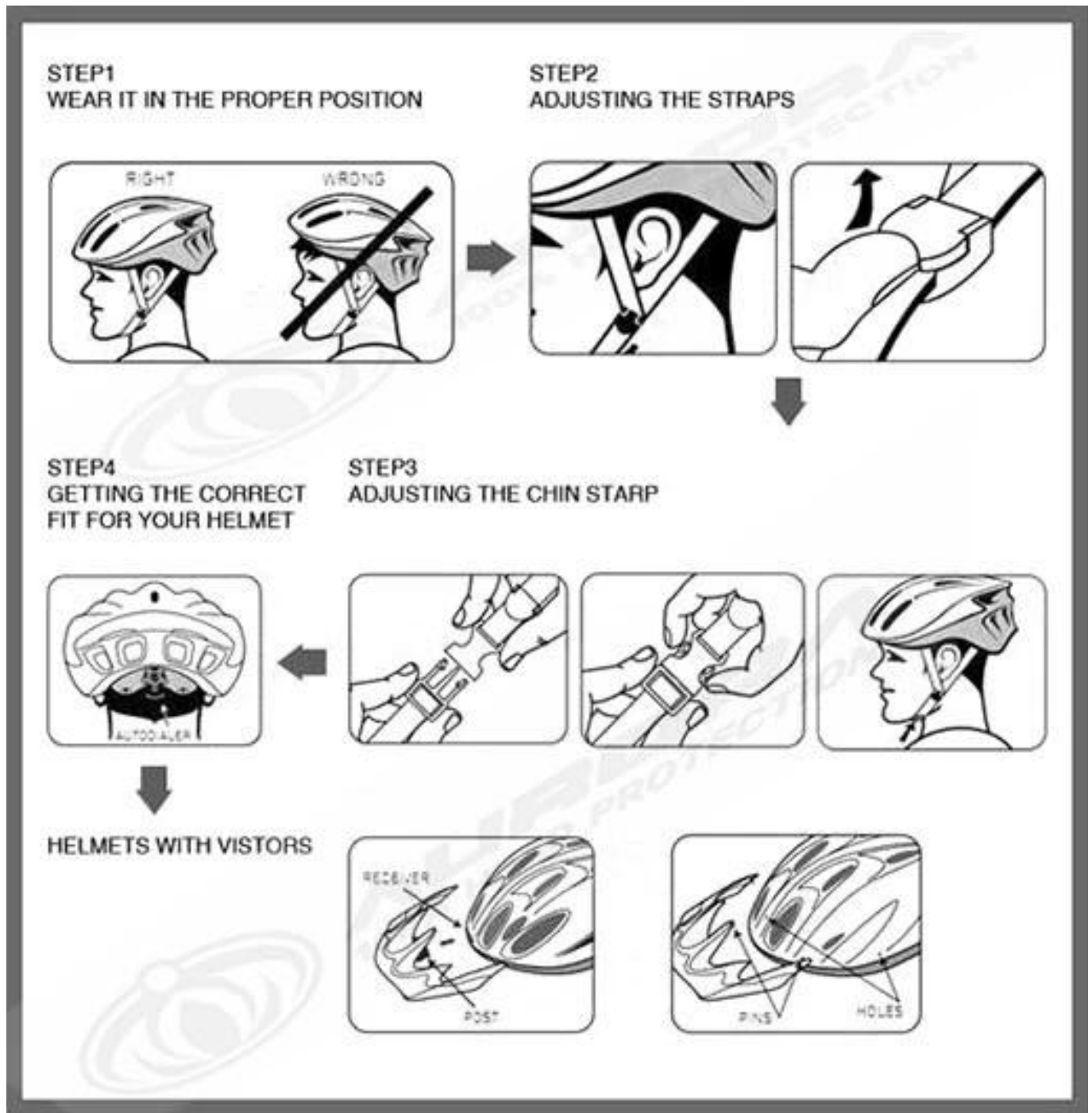
Below we shows how to adjust the fit :

Step 1: Make sure you wear it in the proper position, the brim of helmet should be parallel with your eyebrow

Step 2.Adjust the divider to make sure the strap lock your ear very well

Step 3.Adjusting the chin strap till you feel compact

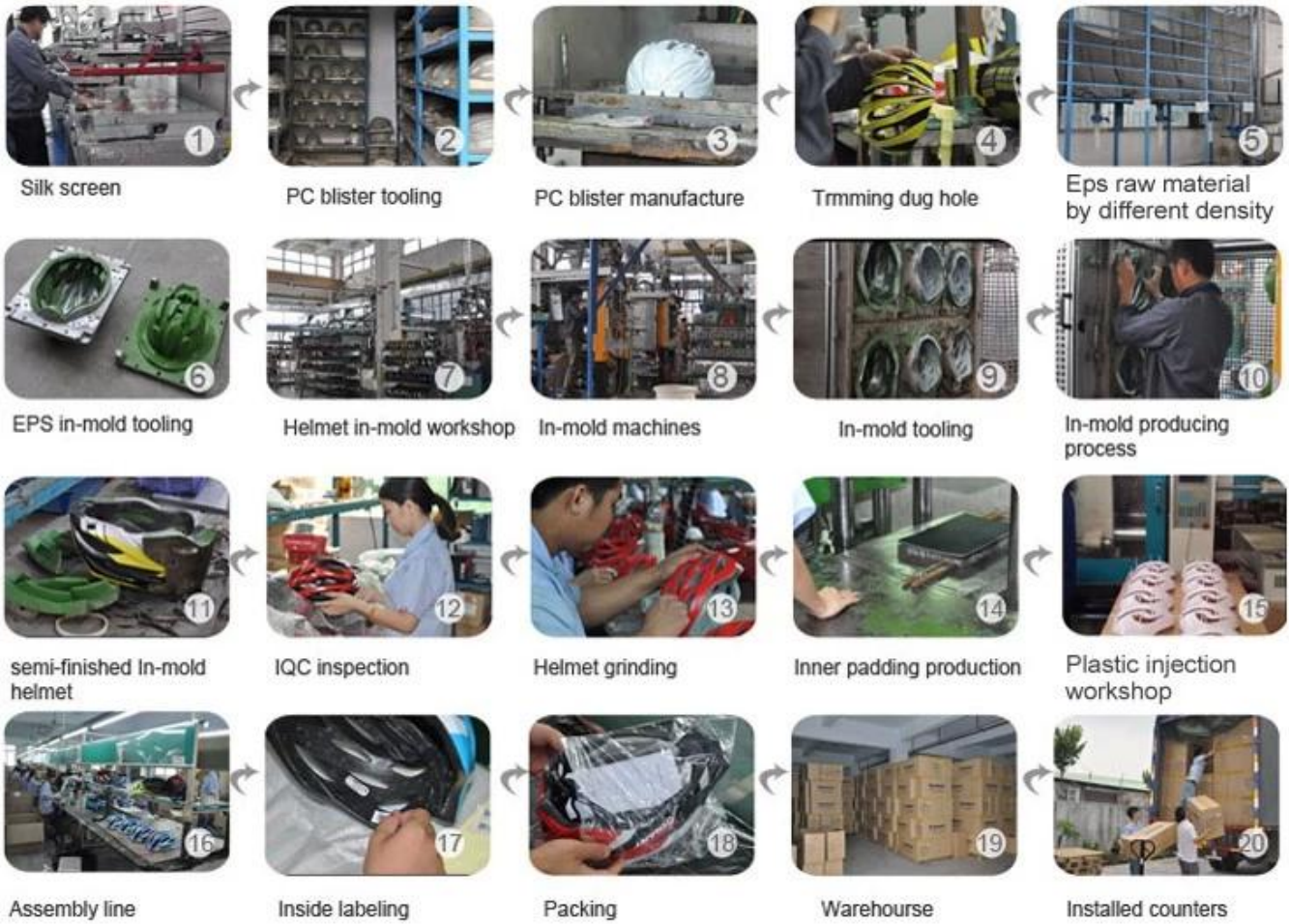
Step 4.Adjust the headlock make sure the helmet cover your head very well



The helmet production procedure is as below:

silk screen → PC blister tooling → PC blister manufacture → Trimming dug hole → EPS raw material by different density → EPS in-mold tooling → helmet in-mold workshop → in-mold machines → in-mold tooling → in-mold producing process → semi-finished in-mold helmet → IQC inspection → helmet grinding → inner padding production → plastic injection workshop → assembly line → inside labeling → packing → warehouse → installed counters.

Production Procedure



Even though we have considered every necessary elements to enhance the body structure in design, but we still use the professional equipments to inspect every aspects of our product! Our advanced in-house testing lab was built according to EN1078, EN397, EN12492, CPSC, etc. testing requirements. Before our mass production or send it to third-party testing organization, we check the quality ourselves & make sure they are qualified!

Our In-house Testing Lab



We provide a wide range of payment terms. You can choose the best method to fulfill the payment. In order to improve the shipping efficiency & reduce the cost, we have built a long relationship with international shipping companies & big shipping agents. According to your helmet order quantity & shipping requirements, we can provide you the best suggestion & assistance. Make every step with us secure & satisfied!

PAYMENT

- We accept T/T ,Western Union or Paypal before production
- If buyers have any problems about payment , please contact us ASAP



SHIPPING

- 3-15 working days since payment receipt (based on actual quantity)
- Tracking No. will be sent to you after delivery . And you will get every important shipping status by email.



Why choose us?

---because we have so many advantages

Quality: with strict quality management system and first-class products

OEM&ODM: We can provide OEM and ODM service for customers

R&D team: With professional and strong technical development team

Price: We have our own production line, to reduce the price to a minimum

Patent: We constantly introduce patented technology products

Service: Perfect after-sales service, so customer satisfaction

Aurora Sports is a helmet manufacturer, with more than 15 years experience in producing all types of helmets. In-house design and R&D teams with established experience, allows Aurora Sports to quickly

answer to demanding requirements and create from scratch whole programs and collections with rigorous quality standards.