

## **Full Brim Vented Hard Hat ABS Construction Safety Helmet ANSI Z89.1 Approved Hardhat**



Model No.	AU-M13-3 Hard Hat
External material	ABS shell
Inner material	4 point suspension system
headband	PE Polythene
Lamp Carring System	External Nylon 6.6 Lamp Clips
Earmuff	30-35db NRR hearing protector
Face mask	PC plastic visor/ PC plastic goggle/ iron mesh
Color	red, yellow, blue,green,orange,black,white,pink
Size/Head circumference	52-63cm
Weight	540 g (ear muffs and eyes shield are not included)
Vents	18 air ventilation with aluminum/ nylon mesh
Technology	Injection
Certification	ANSI TYPE II Class C
Sample time	3-7 working day
MOQ	500 PCS
Packing detail	1.PP bag, PE bag, Blister card, color box and custom-design is welcomed.
	2. Carton packing outside

### ***Safety Helmet accessories available:***

- 1) Safety helmet with LED light: headlamp led light.
- 2) Safety helmet with ear protection and mesh faceshield: Earmuff good sound insulation, Faceshield iron mesh.
- 3) Safety helmet with plastic visor The set is compatible with our special visor and earmuff: Visor plastic

with eye protection,Earmuff good sound insulation.

***The detail pictures of safety helmet:***























### ***Area of application safety/climbing helmets:***

Power generation,Iron tower,BTS station,Coal mining,Work at height,Petrochemical refining, offshore oil and gas,Plumber,Cable car maintenance,Mobile plant maintenance,Aircraft Maintenance,Pulp&paper,Civil infrastructure,Sea rescue,Roof Cleaning,Hiking...



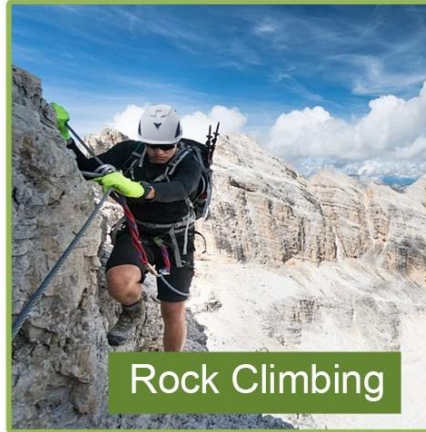
**Safety Helmet**



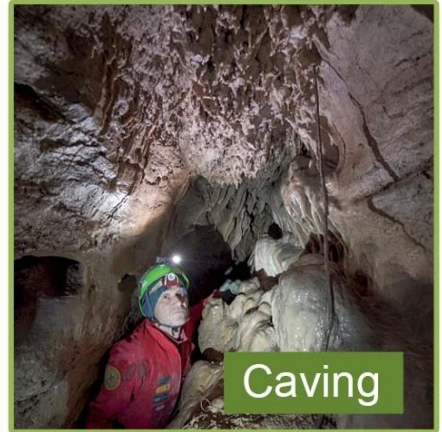
**Tree Care**



**Construction**



**Rock Climbing**



**Caving**



**Work-at-height**



**Sea Rescue**

## ***The head circumference knowledge of safety/climbing helmet:***

### **European Headform:**

An Oval shaped helmet is designed for a rider's head with a dimension which is considerably fit for Europeans.

### **Generic headform:c**

A generic headform helmet is designed for a rider's head with a dimension which is slightly longer front-to-back than its side-to-side measurement.

### **Asian headform:**



**A Round shaped helmet is designed for a rider's head with a dimension which is considerably fit for Asians.**

# Helmet Shape 101



## European Headform

An Oval shaped helmet is designed for a rider's head with a dimension which is considerably fit for Europeans.

## Generic headform

A generic headform helmet is designed for a rider's head with a dimension which is slightly longer front-to-back than its side-to-side measurement.

## Asian headform

A Round shaped helmet is designed for a rider's head with a dimension which is considerably fit for Asians.

## ***Our Test lab:***

In order to manufacture quality helmets, we learn not only from the design theory, but also make progress from testing result! That's why our factory equipped with professional testing lab to ensure every design is practical & amenable! Our testing standard is more strict than the related certificate requirements, that's why we can promise the model that we provide can definitely pass the corresponding test by third-party!

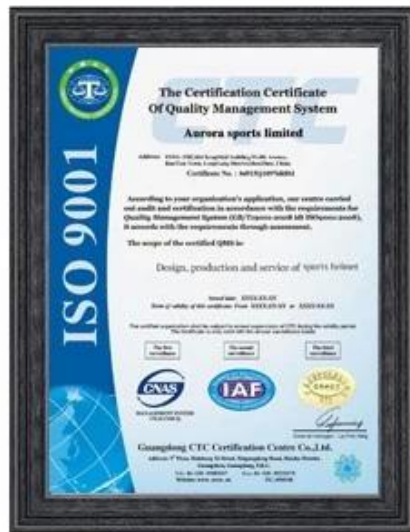
## Our In-house Testing Lab



### **Certification:**

Below is our certificate :we have ISO9001 ,letters patent ,CE documents ,and we have our own lab to make sure every our product can meet the testing requirements

## CERTIFICATE



## Our factory's profile:

Aurora Sports is a helmet manufacturer, with more than 15 years experience in producing all types of helmets. In-house design and R&D teams with established experience, allows Aurora Sports to quickly answer to demanding requirements and create from scratch whole programs and collections with rigorous quality standards.



## CUSTOMIZE FOR BRAND



*Logo style: Dome, Metal, UV-Dart sticker, Water decal..*



### ***The helmet production procedure is as below:***

silk screen → PC blister tooling → PC blister manufacture → Trimming dug hole → EPS raw material by different density → EPS in-mold tooling → helmet in-mold workshop → in-mold machines → in-mold tooling → in-mold producing process → semi-finished in-mold helmet → IQC inspection → helmet grinding → inner padding production → plastic injection workshop → assembly line → inside labeling → packing → warehouse → installed counters.

## Production Procedure



Silk screen



PC blister tooling



PC blister manufacture



Trimming dug hole



Eps raw material  
by different density



EPS in-mold tooling



Helmet in-mold workshop



In-mold machines



In-mold tooling



In-mold producing  
process



semi-finished In-mold  
helmet



IQC inspection



Helmet grinding



Inner padding production



Plastic injection  
workshop



Assembly line



Inside labeling



Packing



Warehouse



Installed counters

### ***The delivery express:***

International express, air freight & sea transportation are all can be well arranged here! You can pick every possible transportation that you want & we will do our best to assist you! We have already built a long-term relationship with different shipping companies & shipping agent, all our efforts aim at providing you the best shipping experience! Choose us, it will be easy to keep the helmets safe all the time!

## 11

