

Quick Details

- Age Group: Kids
- Air Vents: < 8
- Material: EPS
- Certification: CE, CE, EN1078
- Weight (g): 225g
- Color: white, blue, pink, camouflage, white, blue, pink, camouflage
- Size: XS(45-50CM), S(50-55cm), M(54-58cm), XS(45-50CM), S(50-55cm), M(54-58cm)
- Place of Origin: Guangdong, China (Mainland)
- Brand Name: AURORA
- Model Number: AU-C06
- Product name: Vents for maximum cooling EN 1078 child helmets
- Technology: In-Mold (One Step)
- Weight: 225g
- Vents: 6 Air Vents
- Sports: Bike, bicycle, cycling, play, sports
- Finish: Glossy
- MOQ of OEM req: 500 pcs

Packaging & Delivery

Vents for maximum cooling EN 1078 child helmets

Packaging Details: 1. PP bag, PVC bag; Blister card, Color box and Custom-design are welcome.
2. Carton Packing

Delivery Detail: Basically 30 days, this is according to your order quantity

Product Description

Products Specification

Item name	Vents for maximum cooling EN 1078 child helmets
Size:	XS(45-50CM), S(50-55cm), M(54-58cm)
Color	white, blue, pink, camouflage
Material	PC-shell EPS- form
MOQ	500 PCS
Certification	CE EN 1078

Samples and Payment Policy

Spec sample cost	Depends on your request
Spec sample time	10-15 days after confirm the artwork
Random sample cost	1.5 times of unit price
Random sample time	3 days delivery

Payment method

PAYPAL OR T/T

Picture







European Headform:

An Oval shaped helmet is designed for a rider's head with a dimension which is considerably fit for Europeans.

Generic headform:

A generic headform helmet is designed for a rider's head with a dimension which is slightly longer front-to-back than its side-to-side measurement.

Asian headform:

A Round shaped helmet is designed for a rider's head with a dimension which is condierably fit for Asians.

Helmet Shape 101



European Headform

An Oval shaped helmet is designed for a rider's head with a dimension which is considerably fit for Europeans.

Generic headform

A generic headform helmet is designed for a rider's head with a dimension which is slightly longer front-to-back than its side-to-side measurement.

Asian headform

A Round shaped helmet is designed for a rider's head with a dimension which is considerably fit for Asians.

Company Information

Shenzhen Aurora Sports LTD established in the year of 2012, more than 22 years experience.

Expert in production of all kinds of helmets for different sports.

Excellent quality, reasonable price, fast delivery makes us get very good reputation among our customers.

Expert in OEM and ODM orders. Our skilled R&D team offers one stop service for throughout customers.

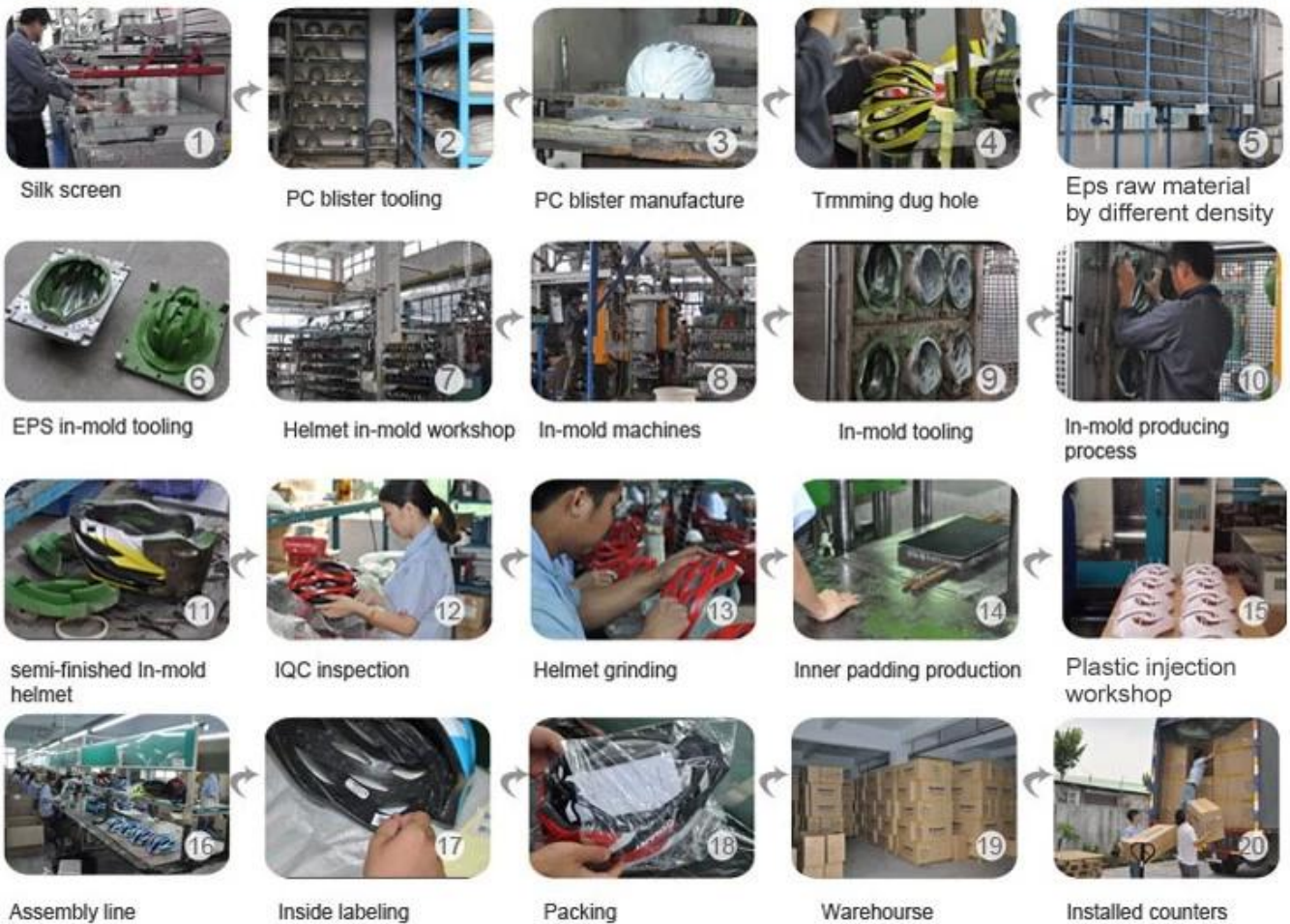
99% export and our main market is North America, European, Australia, Japan etc.

Your enquiry is very welcomed and we will try our utmost to help you establish solid market.

We are looking for long term relationship and get win win situation.

Welcome to visit our website: <http://www.helmetsupplier.com>

Production Procedure



FAQ

1. Do you offer OEM service ?

We accept OEM orders for all our helmets production lines, including client's logos and labels. After many years of exploration and development, we are sure we can meet all your requirements. we also have powerful R&D capabilities , just tell us your ideas, our R&D team can turn your idea into the concrete products, and help you to pass the relative testing standards, ensure the smoothly mass production, also help you to achieve profit maximization.

2. Do you offer ODM SERVICE?

Yes, To meet different customers' needs, usually we reinvest 20% of our annual revenue for new product development. Supported by a team of 15-20 highly-qualified engineers, we design and develop new public molds every season. About 5 to 6 new models are released every month, which always become increasingly popular after launch. Inmold outdoor adult skateboard helmets

3. Can you supply with a small quantity order ?

Yes, we keep some inventory with complete color ways for cater your diversity needs, we can accept to mix the colors with a small quantity.

4. What's your Sample Policy ?

We offer charged samples according to the clients' requirements. The samples will be shipped to you within 24 hours after order confirmation (if without any logo). The samples are delivered by couriers with freight collect. Inmold outdoor adult skateboard helmets

5. How to guarantee clients interests?

We have 360 degree guarantee policy:

a. After you approved the sample, before you place an order and pay for the deposit, cordially welcome

you to pay a visit to our factories, we are sure that you will be greatly impressed by what we have and what we can do.

b. Before the delivery, we support our clients to arrange the third party to inspect the quality of the goods, If mass production is not same as approved sample, we will take the fully responsibility.

c. If we do not ship on time, we will make up your loss.

We cherish every clients, every clients can enjoy our VIP service at any time.

6. Can you do custom packaging for my product?

Yes, Color box can be printed with your logo and your local language.

7. What's the shipment method do you offer?

A. For sample order, we use courier like DHL, UPS, TNT, FEDEX, EMS. DHL is our prefer. You can also arrange your forwarder pick the goods from us. we also ship goods via china post for Brazil and Russia customers, it is easy to clear customs.

B. For huge order, sea cargo is the best choice.

8. What is your payment method?

T/T. Paypal. Western Union.