

طريقة الدفع او السداد | باي بال أو تي / تي







24 . R & D LOGO

NYLON WEBBING					
	PLA2001	PLA2135	PLA2008	PLA2057	PLA2191
	PLA2081	PLA2020	PLA2242	PLA2179	PLA2106
PLA2051	PLA2012	PLA2148	PLA2304	PLA2204	
PLA2034	PLA2041	PLA2273	PLA3880		

					LOGO STICKER

LINING						
	PLA6000	PLA6010-10	PLA6211-02	PLA6325-08	PLA6317	PLA6520

DIVIDER (1)						
	-111	-36	-116	-119	-00	-120
DIVIDER (2)						
	-01	-07	-107	-114	-36	-111
	-116	-106	-117	-113	-105	-110
-00	-115	-109	-112	-104		

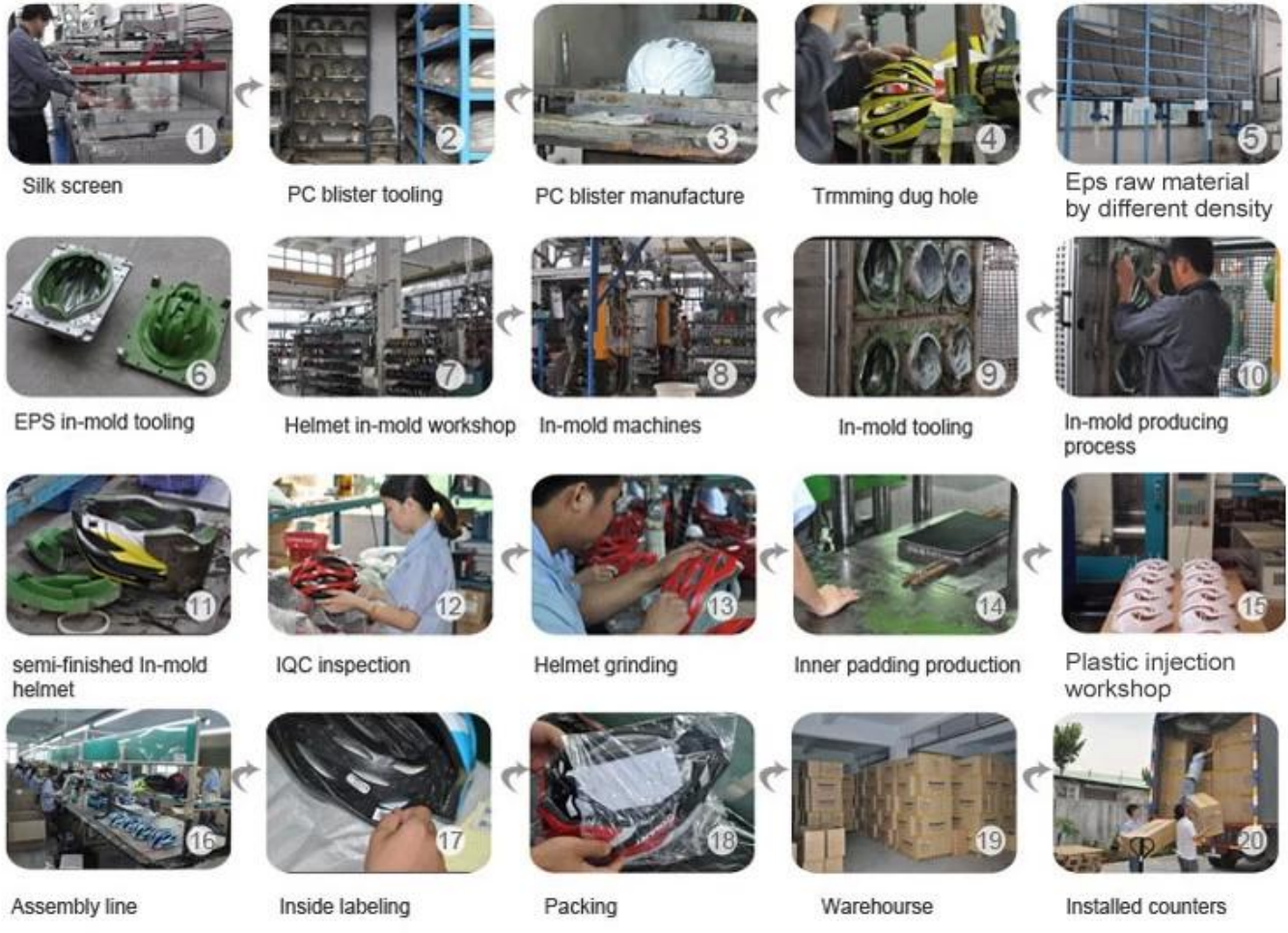
						STRAP BUCKLE
-114	-36	-107	-07	-106	-01	
-113	-104	-117	-115	-116	-00	
-112	-111	-109				

BUCKLE						
	-105	-106	-01	-107	-07	-114
-110	-104	-116	-117	-106	-112	
-115	-111	-00	-109	ITW	MAGNET	

SIZE ADJUSTMENT					
	PLA5022	PLA5073	PLA5285	PLA5406	PLA5663
PLA5058	PLA5127-00	PLA5127	PLA5388-13	PLA5388-01	

					VISOR
PLA1213-00	PLA1213	PLA0481-18	PLA0481	PLA0083-09	
PLA0267	PLA0267-07	PLA0872A	PLA0872-113	PLA0083	

Production Procedure



Our helmets are made of high quality materials and are designed to provide maximum protection and comfort. We are certified to meet the following standards: EN1078, EN397, EN12492, CPSC. Our helmets are available in a variety of colors and designs to suit your needs. Contact us today for more information!

Our In-house Testing Lab



Our in-house testing lab is equipped with state-of-the-art equipment to ensure the highest quality and safety standards for our products. We offer comprehensive testing services, including impact, vibration, and durability testing, to help you identify and resolve any potential issues before your product reaches the market. Our experienced technicians and advanced machinery provide reliable and accurate results, ensuring your products are built to last. Contact us today for more information and assistance. Make your products safer and more durable with our testing services!

