

Quick Details

- Place of Origin: Guangdong, China (Mainland)
- Brand Name: HaoJiGuang
- Model Number: AU-S01
- Material: EPS+PC
- Sport: ski ,snowboard,
- Air vents: 10
- Certification: EN1078
- Age group: adults
- Technology: in-Mould
- Color: Pantone
- Printing: offset printing
- MOQ of OEM req: 300pcs
- Size: M 54-58CM , L 58-60CM
- Best use: ski ,snowboard,
- weight: 270g

Packaging & Delivery

Packaging Details: PP bag+color box+carton

Delivery Detail: 45 days according ski helmets sale to your final quantity

Our Services

We accept OEM orders for all our mens ski helmets production lines, including kids ski helmets client's logos and labels. After many giro snowboard helmet years of exploration and development, we are sure we can meet all your requirements:

1, customized design.

2, customized size & colors & patterns.

3, customized logo.

4, customized color box packaging.

5, customized stickers.

6, customized hang tag, manual, PE bag, plastic bern ski helmets part of buckle.

specification

Model No.	AU-S01	bern snowboard helmets
Material:	EPS, PC	

Inner material:	High Density EPS(expanded polystyrene)
External material:	PC (polycarbonate) shell
Technology:	In-Mould ski helmet safety helmet
Certification:	Certified by CPSC / CE / TÜV-GS / Snell / ASTM / REACH- Safe and Reliable
Best Use:	ski helmet
Gender :	Unisex ski helmet
Style:	ski helmet
Vents:	10
Color:	PANTONE
Head Circumference	M 54-58CM , L 58-60CM
Net Weight:	270g
MOQ of OEM req	300PCS
Sample Time	3-5 days
Bulk lead time	Within 35 days after samples confirmed and deposit received
Packing detail	1. PP bag, PE bag, Blister card, color box and custom-design is welcomed. 2. Carton packing outside
Payment terms	L/C,T/T,Western Union
Supply ability	600,000pcs/Month
Main markets	Europe, America, Canada
Our international quality standards:	ASTM F1447-06 ASTM F1952-09 ASTM F1492-08 ASTM F1898-08 ASTM F1163-04a ASTM F2040-11 ASTMF1045-2007 CPSC 1203 BS EN1078:2012 BS EN1080:1997+A1:2002+A2:2005 BS EN1384:1997+A1:2002 BS EN1077:2007 BS EN1385-1998+A1:2005 EN ISO10256:2003 AS/NZS2063-2008+A1:2009 AS/NZS3838:2006
Our strength:	1. Full sets of Testing Certificate 2. Fast making the sample 3. Good price with first class quality 4. Durable and uvex ski helmets long time service life 5. High effect for protection 6. Delivery on time.

Pictures:







About our headform

European Headform:

An Oval shaped helmet is designed for a rider's head with a dimension which is considerably fit for Europeans.

Generic headform:

A generic headform helmet is designed for a rider's head with a dimension which is slightly longer front-to-back than its side-to-side measurement.

Asian headform:

A Round shaped helmet is designed for a rider's head with a dimension which is condierably fit for

Asians.

Helmet Shape 101



European Headform

An Oval shaped helmet is designed for a rider's head with a dimension which is considerably fit for Europeans.

Generic headform

A generic headform helmet is designed for a rider's head with a dimension which is slightly longer front-to-back than its side-to-side measurement.

Asian headform

A Round shaped helmet is designed for a rider's head with a dimension which is considerably fit for Asians.

Company Information

Shenzhen Aurora Sports Goods Co., LTD established in the year of 2012, more than 22 years experience.

Expert in production of all kinds of helmets for different sports.

Excellent quality, reasonable price, fast delivery makes us get very good reputation among our customers.

Expert in OEM and ODM orders. Our skilled R&D team offers one stop service for throughout customers. 99% export and our main market is North America, European, Australia, Japan etc.

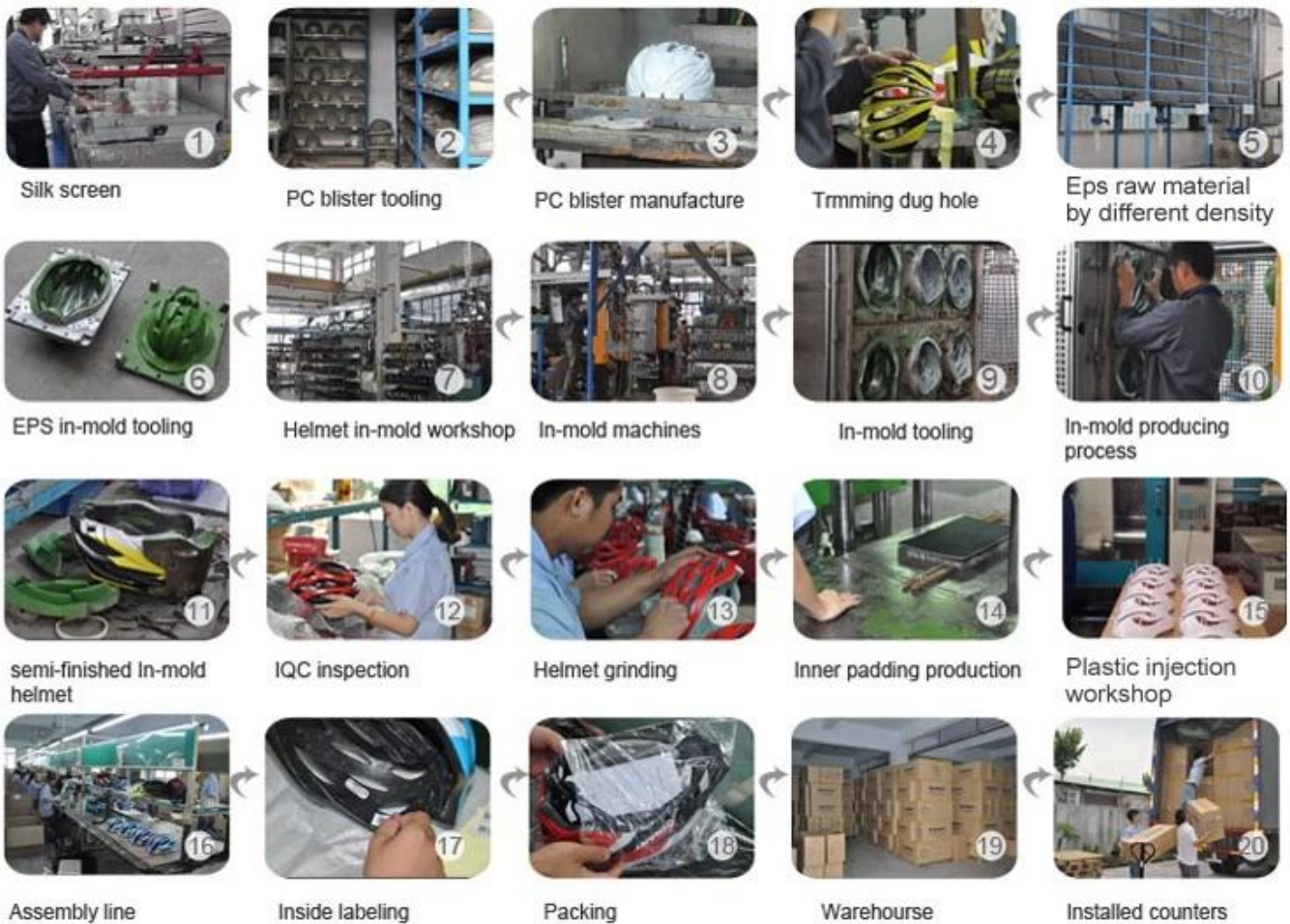
Your enquiry is very welcomed and we will try our utmost to help you establish solid market.

We are looking for long term relationship and get win win situation.

The helmet production procedure is as below:

silk screen → PC blister tooling → PC blister manufacture → Trimming dug hole → EPS raw material by different density → EPS in-mold tooling → helmet in-mold workshop → in-mold machines → in-mold tooling → in-mold producing process → semi-finished in-mold helmet → IQC inspection → helmet grinding → inner padding production → plastic injection workshop → assembly line → inside labeling → packing → warehouse → installed counters.

Production Procedure



FAQ

1. Do you offer OEM service ?

We accept OEM orders for all our helmets production lines, including client's logos and labels. After many years of exploration and development, we are sure we can meet all your requirements. we also have powerful R&D capabilities , just tell us your ideas, our R&D team can turn your idea into the concrete products, and help you to pass the relative testing standards, ensure the smoothly mass production, also help you to achieve profit maximization.

2. Do you offer ODM SERVICE?

Yes, To meet different customers' needs, usually we reinvest 20% of our annual revenue for new product development. Supported by a team of 15-20 highly-qualified engineers, we design and develop new public molds every season. About 5 to 6 new models are released every month, which always become increasingly popular after launch. Inmold outdoor adult skateboard helmets

3. Can you supply with a small quantity order ?

Yes, we keep some inventory with complete color ways for cater your diversity needs, we can accept to mix the colors with a small quantity.

4. What's your Sample Policy ?

We offer charged samples according to the clients' requirements. The samples will be shipped to you

within 24 hours after order confirmation (if without any logo). The samples are delivered by couriers with freight collect. Inmold outdoor adult skateboard helmets

5. How to guarantee clients interests?

We have 360 degree guarantee policy:

- a. After you approved the sample, before you place an order and pay for the deposit, cordially welcome you to pay a visit to our factories, we are sure that you will be greatly impressed by what we have and what we can do.
- b. Before the delivery, we support our clients to arrange the third party to inspect the quality of the goods, If mass production is not same as approved sample, we will take the fully responsibility.
- c. If we do not ship on time, we will make up your loss.

We cherish every clients, every clients can enjoy our VIP service at any time.

6. Can you do custom packaging for my product?

Yes, Color box can be printed with your logo and your local language.

7. What's the shipment method do you offer?

A. For sample order, we use courier like DHL, UPS, TNT, FEDEX, EMS. DHL is our prefer. You can also arrange your forwarder pick the goods from us. we also ship goods via china post for Brazil and Russia customers, it is easy to clear customs.

B. For huge order, sea cargo is the best choice.

8. What is your payment method?

T/T. Paypal. Western Union.