

Quick Details

- Place of Origin: Guangdong, China (Mainland)
- Brand Name: AURORA
- Model Number: AU-M01
- Material: PC+EPS
- Sport: unique welding helmets
- material: PC + EPS
- type: unique welding helmets
- size: 57-61cm
- weight: 275g
- pads: washable inner pads
- vents: 14
- adjustor: Quick-dial glove friendly safety helmets for kids adjustable sizing
- buckle: Quick release chin strap buckle
- color: red, black, white, and so on
- sizes: Two sizes - Small & Standard to fit children and adult

Packaging & Delivery

Packaging Details: PP bag, Color box, Carton

PC shell helmets, aurora unique welding helmets

product description

Item	Content	Optional
product name	unique welding helmets	
material	EPS liner+PC shell	EPS black material, EPS+PC inmould helmet, adjustable chin strap with quick-release buckle; rear lock adjustment; hot-pressing comfortable pads
size	57-61cm	standard adult size or children size
logo	sticker	UV DRT, watermark
MOQ	2000 pcs	
Carton Size	65cm*57cm*46cm	72cm*57c*59cm
Sample time	1 day	available in stock
Production Lead Time	about 45 days	after your confirmation to pre-production samples, and according to your order quantity

[Our Services](#)

We accept OEM orders for all our helmets production safety helmet for toddlers lines, including client's logos and labels. After many years of exploration and development, we are sure we can meet all your requirements:

1, customized design.

2, customized size & colors & patterns.

3, customized logo.

4, customized color box packaging.

5, customized stickers.

6, customized hang tag, manual, PE bag, plastic part of buckle.

Pictures:









Heaform

European Headform:

An Oval shaped helmet is designed for a rider's head with a dimension which is considerably fit for Europeans.


Generic headform:

A generic headform helmet is designed for a rider's head with a dimension which is slightly longer front-to-back than its side-to-side measurement.

Asian headform:

A Round shaped helmet is designed for a rider's head with a dimension which is considerably fit for Asians.

Helmet Shape 101



European Headform An Oval shaped helmet is designed for a rider's head with a dimension which is considerably fit for Europeans.	Generic headform A generic headform helmet is designed for a rider's head with a dimension which is slightly longer front-to-back than its side-to-side measurement.	Asian headform A Round shaped helmet is designed for a rider's head with a dimension which is considerably fit for Asians.
--	--	--

The Fit:

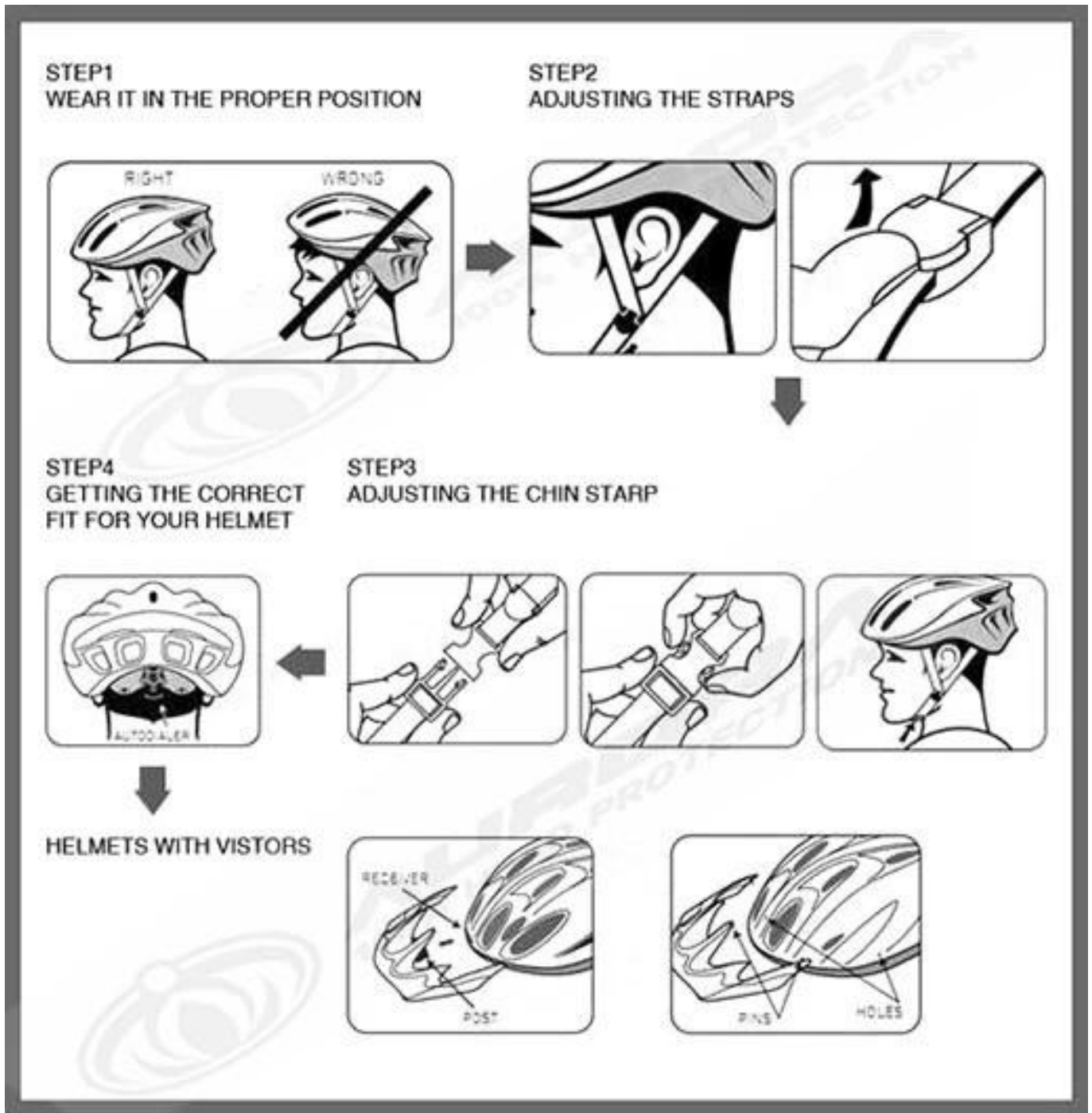
Below we shows how to adjust the fit :

Step 1: Make sure you wear it in the proper position, the brim of helmet should be parallel with your eyebrow

Step 2. Adjust the divider to make sure the strap lock your ear very well

Step 3. Adjusting the chin strap till you feel compact

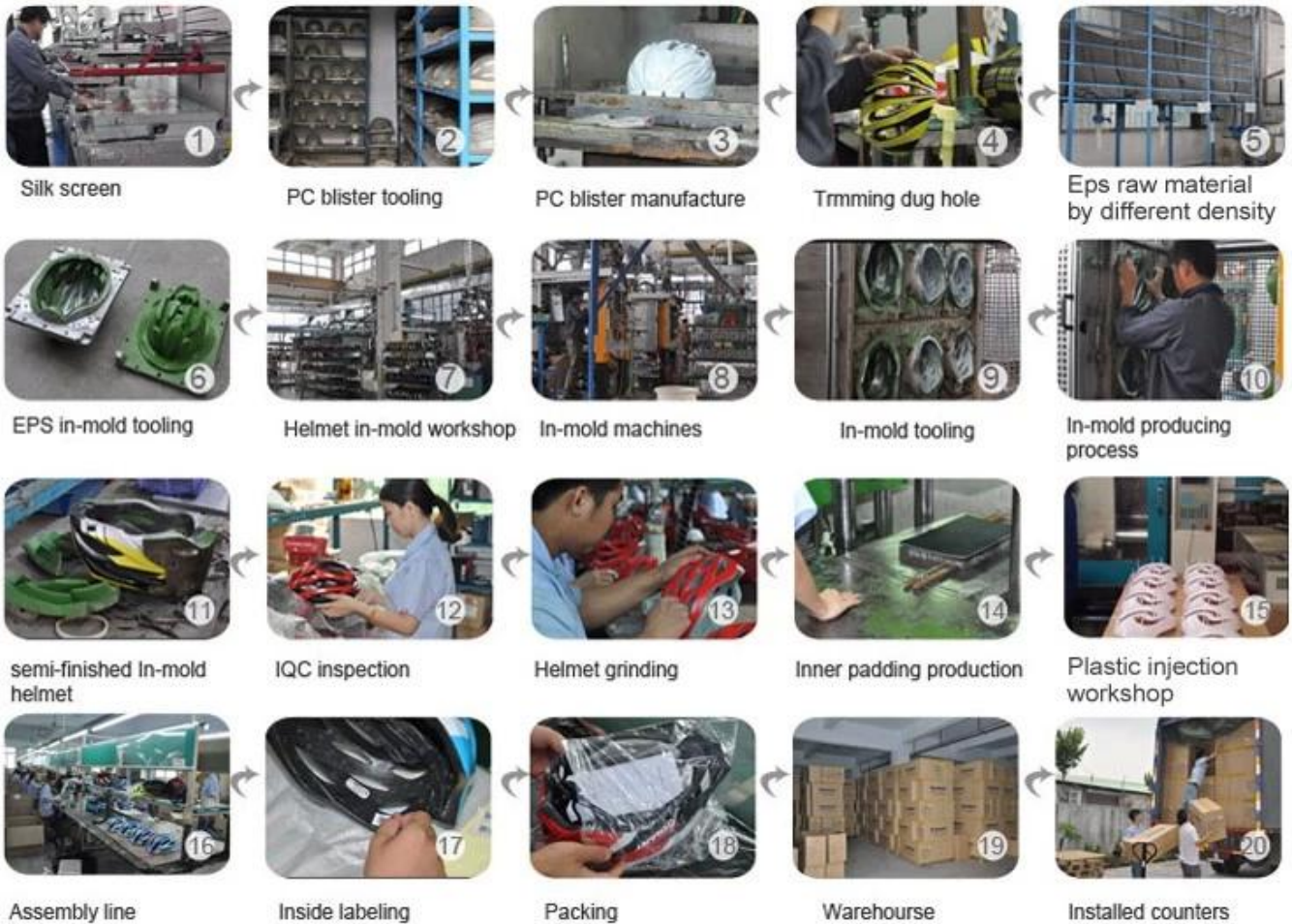
Step 4. Adjust the headlock make sure the helmet cover your head very well



The helmet production procedure is as below:

silk screen → PC blister tooling → PC blister manufacture → Trimming dug hole → EPS raw material by different density → EPS in-mold tooling → helmet in-mold workshop → in-mold machines → in-mold tooling → in-mold producing process → semi-finished in-mold helmet → IQC inspection → helmet grinding → inner padding production → plastic injection workshop → assembly line → inside labeling → packing → warehouse → installed counters.

Production Procedure



Even though we have considered every necessary elements to enhance the body structure in design, but we still use the professional equipments to inspect every aspects of our product! Our advanced in-house testing lab was built according to EN1078, EN397, EN12492, CPSC, etc. testing requirements. Before our mass production or send it to third-party testing organization, we check the quality ourselves & make sure they are qualified!

Our In-house Testing Lab



We provide a wide range of payment terms. You can choose the best method to fulfill the payment. In order to improve the shipping efficiency & reduce the cost, we have built a long relationship with international shipping companies & big shipping agents. According to your helmet order quantity & shipping requirements, we can provide you the best suggestion & assistance. Make every step with us secure & satisfied!

PAYMENT

- We accept T/T ,Western Union or Paypal before production
- If buyers have any problems about payment , please contact us ASAP



SHIPPING

- 3-15 working days since payment receipt (based on actual quantity)
- Tracking No. will be sent to you after delivery . And you will get every important shipping status by email.



Why choose us?

---because we have so many advantages

Quality: with strict quality management system and first-class products

OEM&ODM: We can provide OEM and ODM service for customers

R&D team: With professional and strong technical development team

Price: We have our own production line, to reduce the price to a minimum

Patent: We constantly introduce patented technology products

Service: Perfect after-sales service, so customer satisfaction

Aurora Sports is a helmet manufacturer, with more than 15 years experience in producing all types of

helmets. In-house design and R&D teams with established experience, allows Aurora Sports to quickly answer to demanding requirements and create from scratch whole programs and collections with rigorous quality standards.