

**CE JP397/CE 12492 PPE AU-M12**



# SAFETY HARD HAT



High Impact  
ABS



Size Adjustment  
55-62 cm



Ventilation  
Breathable

Model Name	AU-M12
Material	ABS/PP
Shell Material	PU 4mm
Interior Material	PE
Weight	606g
Sound Reduction	30-35db NRR
Adjustment	Adjustable / Fixed / Both
Color	White / High Visibility
Size Range	55-62cm
Weight	530g
Accessories	8mm / 10mm / 12mm
Compliance	CE
Standards	CE EN 12492 / 397
Lead Time	3-7 days
MOQ	200 units
Options	1) PP shell, PE interior, 2) High Visibility shell, PE interior

- 1) LED light option : LED light
- 2) High Visibility shell option : High Visibility shell















:

මහලු ක්ෂේත්රයේ සහ අනෙකුත් කාර්මික ක්ෂේත්රවල ආරක්ෂා සඳහා අත්පුරුදු සහ මනුෂ්‍ය හිතවත් විසඳුම් සැපයීම සඳහා වෛරසය මඟින් පුනරුත්ථාවක් සැපයීමට අප කැපවී සිටිමු. අපගේ සියලුම සේවකයන් සඳහා සුදුසු සහ ආරක්ෂිත සේවාවක් සැපයීම අපගේ අරමුණයි.





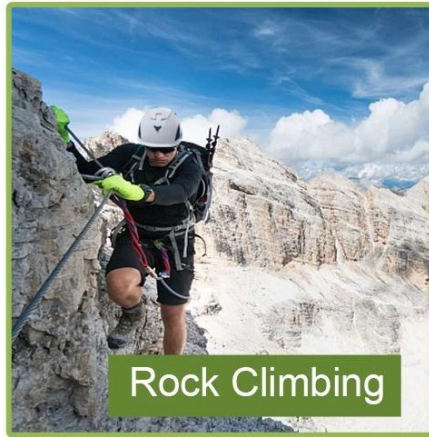
**Safety Helmet**



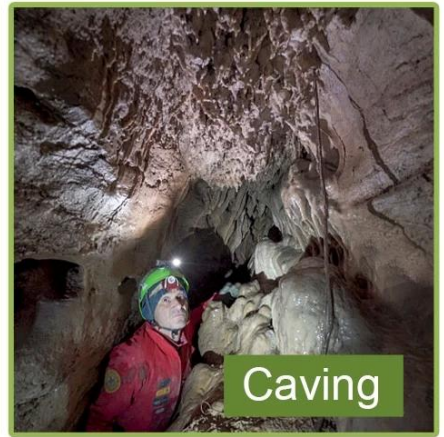
Tree Care



Construction



Rock Climbing



Caving



Work-at-height



Sea Rescue

□□□□□□□□□□□□□□

□□□□□□□□□□□□:

□□□□□□□□□□□□□□□□□□□□□□□□□□□□□□□□□□ □□□□□□□□

□□□□□□□□□□: c

□□□□□□□□□□ □□□□□□□□□□□□□□□□□□□□□□□□□□□□□□

□□□□□□□□:

□□□□□□□□□□□□□□□□□□□□□□□□□□□□ □□□□□□□□



# Our In-house Testing Lab



ISO9001 CE

# CERTIFICATE



Aurora Sports 15  
Aurora Sports

# CUSTOMIZE FOR BRAND



Logo style: Dome, Metal, UV-Dart sticker, Water decal.



□□□□□□□□□□□□□□□□□□□□□□□□

□□□□□□□□ → □□□□□□□□□□□□ → PC□□□□□□□□ → □□□□□□□□□□ → □□□□□□□□ EPS □□ → EPS□□□□□□□□□□□□ → □□□□□□□□ □□□□□□□□□□□□ → □□□□□□□□□□ → □□□□□□□□□□□□ → □□□□□□□□□□□□ → IQC□□ → □□□□□□□□ → □□□□□□□□ □□□□ → □□□□□□□□□□□□□□□□□□□□□□□□ → □□□□□□□□ → □□□□□□□□ → □□□□□□ → □□ → □□□□□□□□□□□□□□

# Production Procedure



Silk screen



PC blister tooling



PC blister manufacture



Trimming dug hole



Eps raw material by different density



EPS in-mold tooling



Helmet in-mold workshop



In-mold machines



In-mold tooling



In-mold producing process



semi-finished In-mold helmet



IQC inspection



Helmet grinding



Inner padding production



Plastic injection workshop



Assembly line



Inside labeling



Packing



Warehouse



Installed counters



Placeholder for barcode and text content.

# SHIPPING

