

□□□ □□□ □□ □□, □□ □□ □□ □□ □□ □□

New Arrival inmold lightweight ski helmet with CE EN1077



CE Certificate

Size: S/M; M/L

Weight: 390g

..... Products Show



<http://www.helmetsupplier.com>



□□ □□ □□ □□ □□:

1. □□ □□: □□ □ □□ □□, □□ □□ □□ □□ □ □,
2. □□ PC □□, □□ □□ □□ □ □ □□.
3. □□ □□ EPS □□, □□ □□, □□ □□, □□□□ □□ □□ □□.
4. 360 ° □□ □□ □□□, □□ □□ □□ □□, □□ □□ □□ □□ □□ □□ □□.
5. □ □□ & □□□□ PP □□ □□□□□□, □□ □ □□ □□ □□ □□ □□ & □□ □□□□ □□ □□ □□□. □□, □□ □□ □□ □□ & □□□□ □ □, □ □□ □□ □□ □ □ □□ □□.

□□□ □□□ □□ □□□ □□:

品名	AU S04 安全头盔
材质	EPS 泡沫 & PC 壳
认证	CE EN1078
重量	170g
颜色	Pantone, 蓝色
尺寸/尺码	M:56-58 C M, L (58-62 CM)
重量	390 g
包装	7 个
MOQ	300pcs
包装方式	PP 袋 + 泡沫垫 + mastercarton

品名 品名 品名:















如何测量头围:

如何测量 Headform:

如何测量头围: 使用软尺测量头顶最宽处的周长。

如何测量 headform:

如何测量 headform: 将头模放入头盔内，调整到合适位置，测量其周长。

如何测量 headform:

如何测量 headform: A 头模 considerably 测量其周长。

Helmet Shape 101



European Headform

An Oval shaped helmet is designed for a rider's head with a dimension which is considerably fit for Europeans.

Generic headform

A generic headform helmet is designed for a rider's head with a dimension which is slightly longer front-to-back than its side-to-side measurement.

Asian headform

A Round shaped helmet is designed for a rider's head with a dimension which is considerably fit for Asians.

FAQ

Q: What is the difference between the three helmet shapes?
A: The European helmet is oval-shaped, the generic helmet is slightly longer front-to-back, and the Asian helmet is round-shaped. Each is designed to fit the specific head shape of the respective region.

Our In-house Testing Lab



Our testing facilities are equipped with ISO9001, CE, and other international standards to ensure the highest quality of our products.

CERTIFICATE



CCC 认证 证书:

CCC 认证 证书 是 中国 国家 认证 认可 委员会 颁发 的 强制性 产品 认证 证书。 证书 有效期 为 5 年。 证书 持有人 必须 符合 认证 标准 的 要求， 并 接受 认证 机构的 监督 检查。 证书 持有人 必须 在 产品 上 标注 CCC 认证 标志， 并 接受 认证 机构的 监督 检查。

CUSTOMIZE FOR BRAND



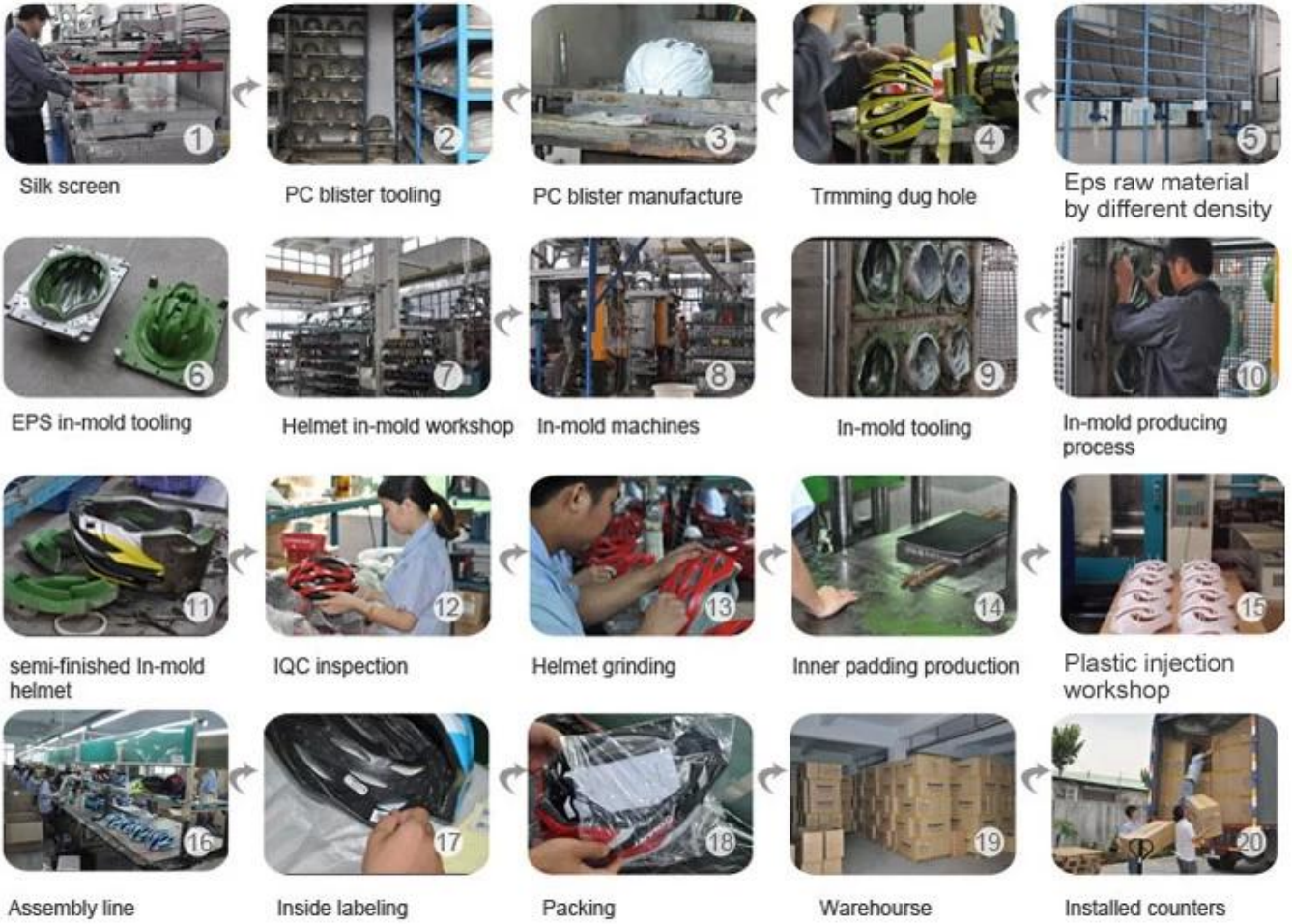
Logo style: Dome, Metal, UV-Dart sticker, Water decal.



物料 產程 介紹 :

物料 → PC → PC → 噴漆 → 噴漆 → EPS → EPS → 噴漆 → 噴漆 → 噴漆 → 噴漆 → 噴漆
 噴漆 → 噴漆 → 噴漆 → IQC → 噴漆 → 噴漆 → 噴漆 → 噴漆 → 噴漆 → 噴漆 → 噴漆 → 噴漆 → 噴漆
 噴漆

Production Procedure



□ □□:

□ □□ □□□ □□□□.

-□□: □□□ □□ □□ □□□ □ □□ □□□□

-OEM & ODM: □□□ □□□ □ □□ OEM □ ODM □□□□ □□□ □ □□□□

-R & D □: □□□ □□ □ □ □□ □□ □□□

-□□: □□□ □□ □□□ □□□ □□ □□ □□□ □□ □□

-□□: □□□□□ □□ □□ □□ □□

-□□□: □□ □ □□ □ □□□, □□□ □□ □□□



QUALITY

With strict quality management system and first-class products



OEM&ODM

We can provide OEM and ODM service for customers



R&D TEAM

With professional and strong technical development team



PRICE

We have our own production line, to reduce the price to a minimum



PATENT

We constantly introduce patented technology products



SERVICE

Perfect after-sales service, so customer satisfaction

CONTACT:

Our products, our quality, our service, our price, our patent! We are a professional OEM & ODM manufacturer of various types of products! We have our own production line, so we can reduce the price to a minimum! We have a professional R&D team, so we can introduce patented technology products! We have a perfect after-sales service, so customer satisfaction!

PAYMENT

- We accept T/T ,Western Union or Paypal before production
- If buyers have any problems about payment , please contact us ASAP



SHIPPING

- 3-15 working days since payment receipt (based on actual quantity)
- Tracking No. will be sent to you after delivery . And you will get every important shipping status by email.

