

□□ □□ □□□□ □□□ □□, KASK □□ □□□□ □□ AU-T01

2015 new developed racing TT cycle helmet

2015 professional aero time trial bicycle helmet with CE .

HOT



- Model No.: AU-T01
- Vents: 13 vents
- Weight: 320 g
- Size: S/M: 54-58cm
M/L: 58-62cm



Three pieces of PC shell can be separate and replaced by different colors.

Ⓜ Ⓜ ⓂⓂ ⓂⓂ Ⓜ Ⓜ :

- Ⓜ ⓂⓂ Ⓜ Ⓜ : ⓂⓂ ⓂⓂⓂ ⓂⓂ ⓂⓂ ⓂⓂ Ⓜ Ⓜ ⓂⓂⓂⓂ, ⓂⓂ ⓂⓂ Ⓜ Ⓜ ⓂⓂⓂ.
- ⓂⓂ **PC** Ⓜ Ⓜ PC ⓂⓂ Ⓜ Ⓜ ⓂⓂ ⓂⓂ ⓂⓂ ⓂⓂ ⓂⓂ Ⓜ ⓂⓂ Ⓜ Ⓜ ⓂⓂⓂ, ⓂⓂ ⓂⓂ ⓂⓂ Ⓜ, Ⓜ Ⓜ Ⓜ Ⓜ Ⓜ Ⓜ, Ⓜ ⓂⓂ ⓂⓂ PC ⓂⓂ, ⓂⓂ ⓂⓂⓂ ⓂⓂ Ⓜ Ⓜ Ⓜ ⓂⓂⓂ.
- **EN166** Ⓜ ⓂⓂ ⓂⓂ : ⓂⓂⓂⓂ Ⓜ Ⓜ ⓂⓂ, ⓂⓂ, ⓂⓂⓂⓂ, ⓂⓂⓂ, ⓂⓂⓂ, ⓂⓂ - ⓂⓂ Ⓜ ⓂⓂ ⓂⓂ Ⓜ ⓂⓂⓂ.
- Ⓜ ⓂⓂ : (ⓂⓂⓂⓂ ⓂⓂ) Ⓜ ⓂⓂ PC (ⓂⓂ ⓂⓂⓂⓂⓂ) + EPS Ⓜ.
- ⓂⓂ ⓂⓂⓂⓂ: Ⓜ ⓂⓂⓂ ⓂⓂ Ⓜ Ⓜ; Ⓜ ⓂⓂ ⓂⓂ ⓂⓂ; ⓂⓂⓂ ⓂⓂⓂ ⓂⓂ;
- ⓂⓂ: CE-EN1078 ⓂⓂ ⓂⓂⓂ ⓂⓂ ⓂⓂ.

Ⓜ Ⓜ ⓂⓂ ⓂⓂⓂ ⓂⓂ:

| | |
|------------|--|
| Ⓜ Ⓜ | AU-T01 Ⓜ Ⓜ ⓂⓂ ⓂⓂ |
| Ⓜ Ⓜ | ⓂⓂⓂ EPS Ⓜ (ⓂⓂ ⓂⓂⓂⓂⓂ) |
| Ⓜ Ⓜ | + Ⓜ ⓂⓂⓂⓂⓂ ⓂⓂ PC ⓂⓂ ⓂⓂ PC (ⓂⓂ ⓂⓂⓂⓂⓂ) Ⓜ |
| Ⓜ Ⓜ | ⓂⓂ |
| ⓂⓂ | CE EN1078 |
| ⓂⓂ | 13 ⓂⓂⓂ |
| Ⓜ | ⓂⓂ, ⓂⓂⓂ ⓂⓂ |
| ⓂⓂ / ⓂⓂ ⓂⓂ | S / M (54-58CM) M / L (58-62CM) |
| ⓂⓂ | 320g |
| ⓂⓂ ⓂⓂ | 7 Ⓜ |
| ⓂⓂ ⓂⓂⓂⓂ | ⓂⓂ - ⓂⓂⓂⓂ ⓂⓂ ⓂⓂ, ⓂⓂⓂ ⓂⓂ, Ⓜ ⓂⓂ ⓂⓂ ⓂⓂⓂ, ⓂⓂ-ITW ⓂⓂ , ⓂⓂⓂ ⓂⓂ Ⓜ ⓂⓂⓂ |
| ⓂⓂⓂ ⓂⓂ ⓂⓂ | PP ⓂⓂ + ⓂⓂ ⓂⓂ ⓂⓂ ⓂⓂ + mastercarton |

Ⓜ ⓂⓂ ⓂⓂ ⓂⓂ ⓂⓂ ⓂⓂⓂ ⓂⓂ:





Eight color ways



GOGGLE

Including face grille conforming to EN 166/174 for excellent protection against fog and scratch.



Three pieces of PC shell can be separate and replaced by different colors.



SOFT WASHABLE PADS

Ergonomic interior padding for comfort and durability





NYLON STRAP & CHIN STRAP

Designed to limit risk of losing helmet during a fall, side strap-adjustment to assist with a proper fit.





**EN166,EN174
Certificated**





ෆෆෆෆ ෆෆ ෆෆෆෆ:

ෆෆෆෆ, ෆෆෆෆ ෆෆ & A ෆෆෆෆ; ෆෆ ෆෆ 24 ෆෆ ෆෆෆෆ ෆෆ ෆෆෆෆ ෆෆ. ෆෆෆෆ ෆෆෆෆ ෆෆ ෆෆෆෆ ෆෆෆෆ ෆෆෆෆ ෆෆෆෆ ෆෆෆෆ R & A ෆෆ ෆෆ ෆෆ ෆෆෆෆ ෆෆෆෆ ෆෆෆෆෆෆ D support.We ෆෆෆෆ ෆෆ ෆෆෆෆ ෆෆෆෆ ෆෆෆෆ ෆෆ ෆෆෆෆ ෆෆ ෆෆ ෆෆ ෆෆෆෆ ෆෆ, ෆෆ ෆෆෆෆ ෆෆ ෆෆෆෆෆ ෆෆ, ෆෆ ෆෆෆෆෆ, ෆෆ ෆෆෆෆ ෆෆ ෆෆෆෆෆ ෆෆ ෆෆ ෆෆෆෆෆ ෆෆ ෆෆ ෆෆෆෆෆ ෆෆ ෆෆ ෆෆෆෆෆ.

| | | | | | |
|------------------|---------|---------|---------|---------|---------|
| NYLON WEBBING | | | | | |
| | PLA2001 | PLA2135 | PLA2008 | PLA2057 | PLA2191 |
| | | | | | |
| | PLA2081 | PLA2020 | PLA2242 | PLA2179 | PLA2106 |
| | | | | | |
| PLA2051 | PLA2012 | PLA2148 | PLA2304 | PLA2204 | |
| | | | | | |
| PLA2034 | PLA2041 | PLA2273 | PLA3880 | | |

| | | | | | |
|--|--|--|--|--|-----------------|
| | | | | | LOGO STICKER |
| | | | | | |
| | | | | | |
| | | | | | |

| | | | | | | |
|--------|---------|------------|------------|------------|---------|---------|
| LINING | | | | | | |
| | PLA6000 | PLA6010-10 | PLA6211-02 | PLA6325-08 | PLA6317 | PLA6520 |

| | | | | | | |
|----------------|------|------|------|------|------|------|
| DIVIDER (1) | | | | | | |
| | -111 | -36 | -116 | -119 | -00 | -120 |
| DIVIDER (2) | | | | | | |
| | -01 | -07 | -107 | -114 | -36 | -111 |
| | | | | | | |
| | -116 | -106 | -117 | -113 | -105 | -110 |
| | | | | | | |
| -00 | -115 | -109 | -112 | -104 | | |

| | | | | | | |
|------|------|------|------|------|-----|-----------------|
| | | | | | | STRAP BUCKLE |
| -114 | -36 | -107 | -07 | -106 | -01 | |
| | | | | | | |
| -113 | -104 | -117 | -115 | -116 | -00 | |
| | | | | | | |
| -112 | -111 | -109 | | | | |

| | | | | | | |
|--------|------|------|------|------|--------|------|
| BUCKLE | | | | | | |
| | -105 | -106 | -01 | -107 | -07 | -114 |
| | | | | | | |
| -110 | -104 | -116 | -117 | -106 | -112 | |
| | | | | | | |
| -115 | -111 | -00 | -109 | ITW | MAGNET | |

| | | | | | |
|--------------------|------------|---------|------------|------------|---------|
| SIZE ADJUSTMENT | | | | | |
| | PLA5022 | PLA5073 | PLA5285 | PLA5406 | PLA5663 |
| | | | | | |
| PLA5058 | PLA5127-00 | PLA5127 | PLA5388-13 | PLA5388-01 | |

| | | | | | |
|------------|------------|------------|-------------|------------|-------|
| | | | | | VISOR |
| PLA1213-00 | PLA1213 | PLA0481-18 | PLA0481 | PLA0083-09 | |
| | | | | | |
| PLA0267 | PLA0267-07 | PLA0872A | PLA0872-113 | PLA0083 | |



The Dial of Adjustment can be interchangeable with LED light

KASK

Headform :

Headform is a model of a human head used for testing helmets.


headform :

headform is a model of a human head used for testing helmets.


headform :

Headform is a model of a human head used for testing helmets.


Helmet Shape 101



European Headform
An Oval shaped helmet is designed for a rider's head with a dimension which is considerably fit for Europeans.



Generic headform
A generic headform helmet is designed for a rider's head with a dimension which is slightly longer front-to-back than its side-to-side measurement.



Asian headform
A Round shaped helmet is designed for a rider's head with a dimension which is considerably fit for Asians.

:

Headform is a model of a human head used for testing helmets.

& A 00000; 00 0 00! 000 00 0000 0000 0000 0000 00 00 0000 00 0 0 00000 00000 0000 00 0 0 00000 0 0000, 00 0000 00 0 0000 0 00000!

Our In-house Testing Lab



00:

0000 0000000 : 0000 ISO9001, 00 00, CE 0000 0000, 0000 0000 00 0000 00 0 0 0000 00 0000 00 0000 0000

CERTIFICATE |



認證服務：

本公司提供各項國際認證服務，包括 ISO 9001、ISO 14001、ISO 27001、RoHS、REACH、CE、UL、ETL、TÜV、SGS、BSCI、SA8000 等。我們擁有豐富的經驗和專業技術團隊，能為客戶提供全方位的支持和服務。如有需要，請洽詢我們的銷售人員。

CUSTOMIZE FOR BRAND



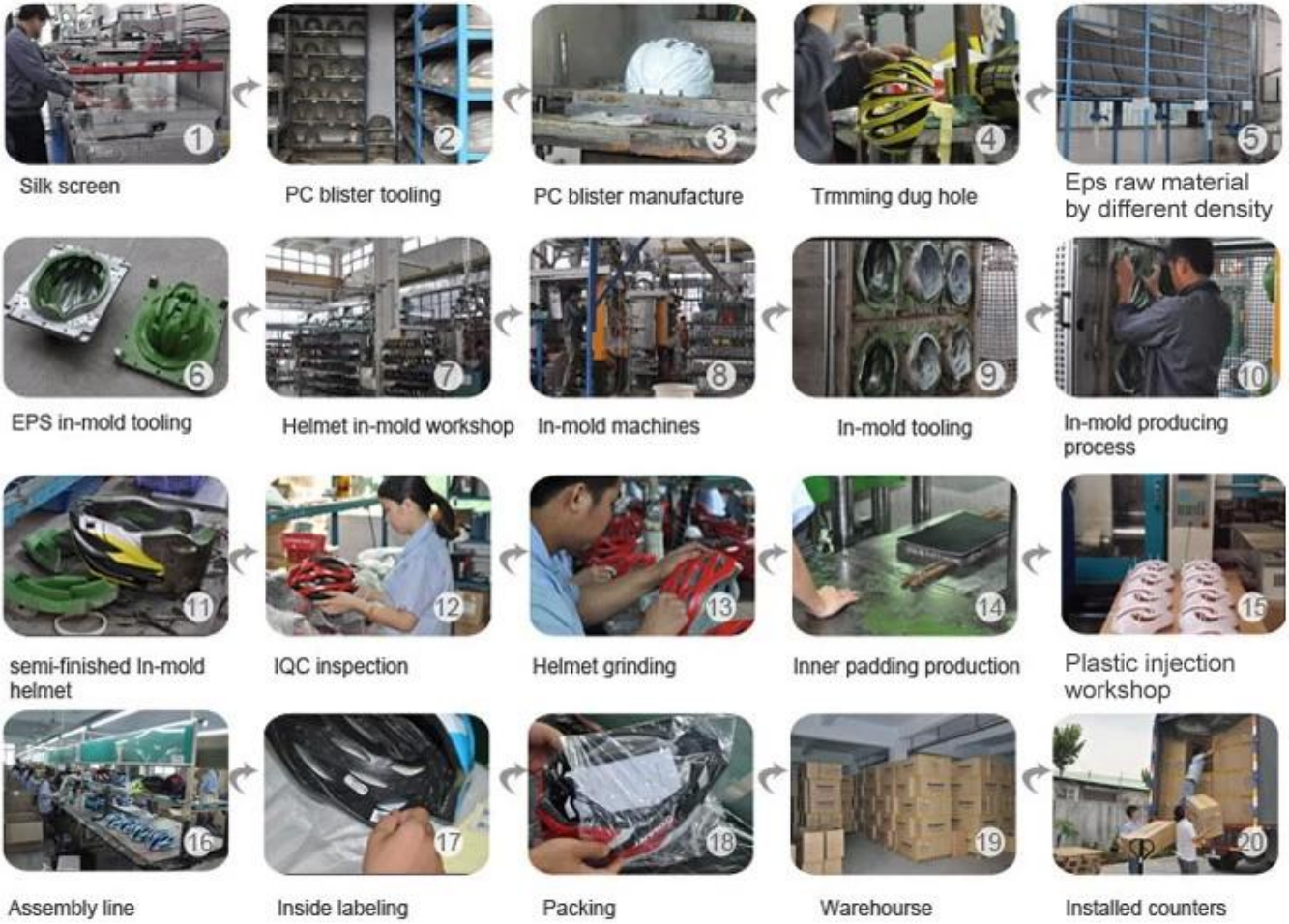
Logo style: Dome, Metal, UV-Dart sticker, Water decal.



PC 3D 3D 3D :

PC 3D → PC 3D → PC 3D → 3D 3D 3D → 3D 3D 3D EPS 3D → EPS - 3D 3D → 3D 3D 3D → 3D 3D → - 3D 3D → 3D 3D 3D → 3D - 3D 3D → IQC 3D → 3D 3D → 3D 3D 3D → 3D 3D 3D 3D → 3D 3D → 3D 3D → 3D → 3D → 3D 3D.

Production Procedure



□□ □□ :

□□ □□, □□□□ & A; □□ □□□ □ □□□ □□ □ □□□! □□□□ □□□□ □□□ & A □□□□ □□ □□ □□□ □ □□□□; □□□□ □□□□ □□ □□□ □□ □□□! □□□□ □□ □□ □□ □□ & A □□□□ □□□□ □□; □□ □□□□, □□□□ □□ □□□□ □□□□ □□ □□□ □□□ □□□□! □□□□ □□, □□ □□ □□□ □□ □□ □□□□!

SHIPPING

