

**MTB 000 000 TT 00, POC TT 00 AU-T01**

new developed racing TT cycle helmet

# professional aero time trial bicycle helmet with CE.

**HOT**



- Model No.:  
AU-T01
- Vents:  
13 vents
- Weight:  
320 g
- Size:  
S/M: 54-58cm  
M/L: 58-62cm



Three pieces of PC shell  
can be separate and  
replaced by different colors.

**TT** :

- Waterdrop : Waterdrop ,

- PC : PC Aero Cycling Aero PC

- EN166 : 4

- PC (EPS) + EPS

- : ; ; ;

- CE-EN1078

**TT** :

TT	AU-T01.
TT	EPS ( )
TT	PC ( ) + 3 Aero PC
TT	
TT	CE EN1078.
TT	13
TT	Pantone, ( )
TT / TT	S / M (54-58cm) m / l (58-62cm)
TT	320g.
TT	ITW , <a href="#"></a>
MOQ	300pcs.
TT TT	PP + TT TT + MasterCarton.

**MTB** :



**Eight color ways**



**GOGGLE**

Including face grille conforming to EN 166/174 for excellent protection against fog and scratch.



Three pieces of PC shell can be separate and replaced by different colors.



### **SOFT WASHABLE PADS**

Ergonomic interior padding for comfort and durability







## **NYLON STRAP & CHIN STRAP**

---

Designed to limit risk of losing helmet during a fall, side strap-adjustment to assist with a proper fit.





**EN166,EN174  
Certificated**





### □□□ □□□□:

□□□□ □□□ 20 □ □□ □□ □□□ □□□ □□□□ □□□□. □□□ □ □□□ □□□ □□□ R & D □□□ □□ □ □ □□□□ □□ □□□ □□ □□□□ □□ □ □□□ □□□□ □□□□□□. □□□ □□□ □□ □□, □□ □□□ □□, □□ □□□ □□ □□□, □□ □□ □□□, □□□□ □□□ □□□ □□ □□□□ □□□□□□. □□, □□ □□□ □□ □□, □□□ □□ □□ □□□□ □□□□ □□ □□□□ □□ □ □ □□□□....□



NYLON WEBBING					
	PLA2001	PLA2135	PLA2008	PLA2057	PLA2191
	PLA2081	PLA2020	PLA2242	PLA2179	PLA2106
PLA2051	PLA2012	PLA2148	PLA2304	PLA2204	
PLA2034	PLA2041	PLA2273	PLA3880		

					LOGO STICKER

LINING						
	PLA6000	PLA6010-10	PLA6211-02	PLA6325-08	PLA6317	PLA6520

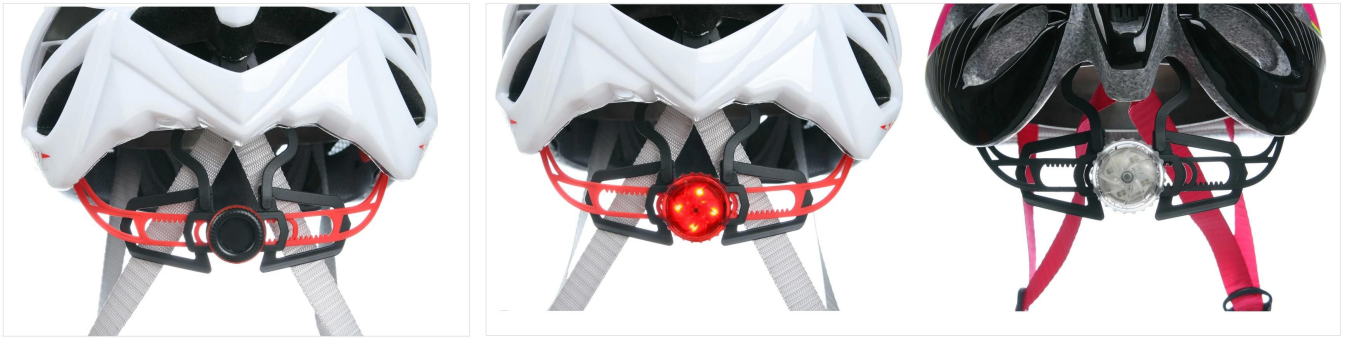
DIVIDER (1)						
	-111	-36	-116	-119	-00	-120
DIVIDER (2)						
	-01	-07	-107	-114	-36	-111
	-116	-106	-117	-113	-105	-110
-00	-115	-109	-112	-104		

						STRAP BUCKLE
-114	-36	-107	-07	-106	-01	
-113	-104	-117	-115	-116	-00	
-112	-111	-109				

BUCKLE						
	-105	-106	-01	-107	-07	-114
-110	-104	-116	-117	-106	-112	
-115	-111	-00	-109	ITW	MAGNET	

SIZE ADJUSTMENT					
	PLA5022	PLA5073	PLA5285	PLA5406	PLA5663
PLA5058	PLA5127-00	PLA5127	PLA5388-13	PLA5388-01	

					VISOR
PLA1213-00	PLA1213	PLA0481-18	PLA0481	PLA0083-09	
PLA0267	PLA0267-07	PLA0872A	PLA0872-113	PLA0083	



The Dial of Adjustment can be interchangeable with LED light

### POC TT Helmets:

POC TT :

POC TT helmets are designed for a rider's head with a dimension which is considerably fit for Europeans.




POC TT :

POC TT helmets are designed for a rider's head with a dimension which is slightly longer front-to-back than its side-to-side measurement.

POC TT :

POC TT helmets are designed for a rider's head with a dimension which is considerably fit for Asians.

# Helmet Shape 101

		
<p><b>European Headform</b> An Oval shaped helmet is designed for a rider's head with a dimension which is considerably fit for Europeans.</p>	<p><b>Generic headform</b> A generic headform helmet is designed for a rider's head with a dimension which is slightly longer front-to-back than its side-to-side measurement.</p>	<p><b>Asian headform</b> A Round shaped helmet is designed for a rider's head with a dimension which is condierably fit for Asians.</p>

POC TT :

POC TT helmets are designed for a rider's head with a dimension which is considerably fit for Europeans! POC TT helmets are designed for a rider's head with a dimension which is slightly longer front-to-back than its side-to-side measurement. POC TT helmets are designed for a rider's head with a dimension which is considerably fit for Asians. POC TT helmets are designed for a rider's head with a dimension which is slightly longer front-to-back than its side-to-side measurement. POC TT helmets are designed for a rider's head with a dimension which is considerably fit for Europeans!

我們擁有專業的測試設備！我們的測試設備符合 ISO 9001 標準。我們的測試設備符合 CE 標準。我們的測試設備符合 3 年保修。我們的測試設備符合 CE 標準！

## Our In-house Testing Lab



：

我們擁有專業的測試設備。我們的 ISO9001 標準，CE 標準，我們的測試設備符合 CE 標準，我們的測試設備符合 3 年保修。我們的測試設備符合 CE 標準。



# CERTIFICATE



□□□ □□□ □□□ :

□□□ □□□□ □□ □□□ □□□□□ □ 15 □ □□□ □□□ □□ □□□□□□□□□□. □□ □□ □□□□ □□□ □□□ □□□□ □□□□ □□ □□□ □ □□□□ □ □□□□ □□ □ □□□□.

CUSTOMIZE FOR BRAND



Logo style: Dome, Metal, UV-Dart sticker, Water decal.

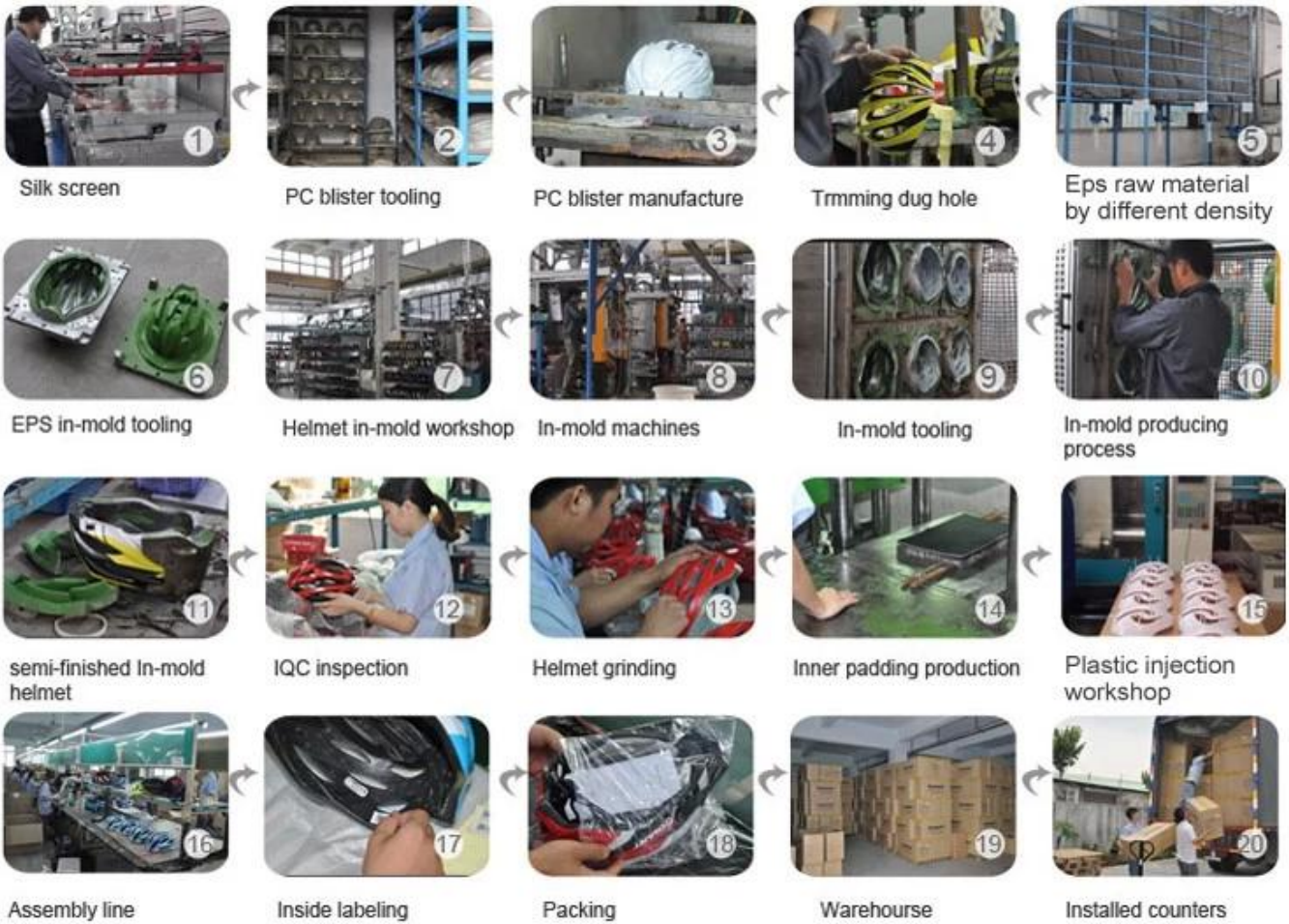


PC PC PC PC PC PC PC PC.

PC PC → PC PC PC PC → PC PC PC → PC PC PC → EPS PC PC PC PC → eepsin-mold tooling. → PC in-mold PC PC → PC PC → PC PC → PC PC PC → PC PC PC PC PC PC → IQC PC → PC PC → PC PC PC → PC PC PC PC PC → PC PC → PC PC → PC PC → PC PC PC.



# Production Procedure



## 品質管理 :

品質管理は、製品の品質を確保するために不可欠なプロセスです。製造工程の各段階で厳格な検査を実施し、不良品を早期に発見・修正することで、最終的に消費者に安全で信頼性の高い製品を提供します。

# SHIPPING

