

□□ □□ □□□ □□□ □□, □□□ □□□ □□ **TT** □□ **AU-T01**

new developed racing TT cycle helmet

# professional aero time trial bicycle helmet with CE.

**HOT**



- Model No.: AU-T01
- Vents: 13 vents
- Weight: 320 g
- Size: S/M: 54-58cm  
M/L: 58-62cm



Three pieces of PC shell can be separate and replaced by different colors.

**□□□□ □□□□ □□□□ □□□□ □□□□ :**

- □□□□ □□□□ □□□□ : Waterdrop □□□□□ □□□□□ □□□□ □□□□□, □□□□□ □□□□□□□□ □□□□□□□□.
- □□□□ **PC** □□ : PC □□□□ □□□□ □□□□ Aero Cycling □□□□□□□□ □□□□□ □□□□□ □□□□□ □□□□□ □□□□□ □□□□□ □□□□□. □□□□□ Aero PC □□□□□ □□□□□ □□□□□□□□□□□□□□ □□□□□□□□.
- **EN166** □□□□ □□□□ : □□□□, □□□□, □□□□□, □□□□□ □□□□□□□□□□□□□□□ 4 □□□□□□ □□□□□ - □□□□□ □□□□□□□□.
- □□□□ □□ : □□□□ □□□□ (□□□□□□□□□□) + EPS □□ (□□□□□□□□□□).
- □□□□□□□□□□: □□□□□□□□□□□□□ □□□□□□□ □□□□□□□□□□; □□□□□□ □□□□□; □□□□□□□□□□; □□□□□□□□□□.
- □□□□: CE-EN1078 □□□□□□□□□□.

**□□□□ □□□□ □□□□ □□□□:**

□□□□ □□.	AU-T01. □□□□ □□□□ □□□□
□□□□ □□	□□□□ EPS □ (□□□□□□□□□□)
□□□□ □□	PC (□□□□□□□□□□) □ + 3 □□□□ Aero PC □□□□□□
□□□□ □□	□□□□
□□□□ □□	CE EN1078.
□□□□ □□	13 □□□□□□□□
□□□□ □□	Pantone, □□□□□□□□□□
□□□□ / □□□□ □□	S / M (54-58cm) m / l (58-62cm)
□□□□ □□	320g.
□□□□ □□	7 □□□□
□□□□ □□	□□□□ - □□□□□□□□, <a href="#">□□□□□□□□□□</a> , Tetonon □□□□□□□□, □□□□ ITW □□□□, □□□□□□□□□□□□□□□□
□□□□□□□□ □□□□	PP □□□□ + □□□□ □□□□ □□□□□ + MasterCarton.

**□□□□ □□□□ □□□□ □□□□ □□□□:**





**Eight color ways**



**GOGGLE**

Including face grille conforming to EN 166/174 for excellent protection against fog and scratch.



Three pieces of PC shell can be separate and replaced by different colors.

---



### **SOFT WASHABLE PADS**

---

Ergonomic interior padding for comfort and durability





## **NYLON STRAP & CHIN STRAP**

---

Designed to limit risk of losing helmet during a fall, side strap-adjustment to assist with a proper fit.

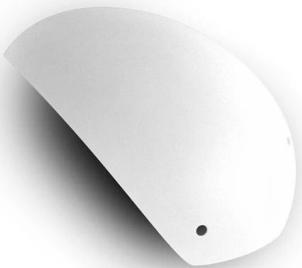




**EN166,EN174  
Certificated**







## ෆෆෆ ෆෆෆෆ:

ෆෆෆෆ ෆෆෆ 20 ෆ ෆෆ ෆෆ ෆෆෆ ෆෆෆෆ ෆෆෆෆෆ. ෆෆෆ ෆ ෆෆෆෆ ෆෆෆ ෆෆෆ R & D ෆෆෆ ෆෆ ෆ ෆෆෆෆ ෆෆ ෆෆ ෆෆෆෆ ෆෆ ෆෆෆෆ ෆෆෆෆෆෆෆෆෆ. ෆෆෆ ෆෆෆ ෆෆ ෆෆ, ෆෆ ෆෆෆ ෆෆ, ෆෆ ෆෆෆ ෆෆ ෆෆෆ, ෆෆ ෆෆ ෆෆෆ, ෆෆෆෆ ෆෆෆ ෆෆෆ ෆෆ ෆෆෆෆ ෆෆෆෆෆෆ. ෆෆ, ෆෆ ෆෆෆ ෆෆ ෆෆ, ෆෆෆ ෆෆ ෆෆෆෆ ෆෆෆෆ ෆෆ ෆෆෆෆ ෆෆ ෆ ෆෆෆෆ....ෆ

NYLON WEBBING					
	PLA2001	PLA2135	PLA2008	PLA2057	PLA2191
	PLA2081	PLA2020	PLA2242	PLA2179	PLA2106
PLA2051	PLA2012	PLA2148	PLA2304	PLA2204	
PLA2034	PLA2041	PLA2273	PLA3880		

					LOGO STICKER

LINING						
	PLA6000	PLA6010-10	PLA6211-02	PLA6325-08	PLA6317	PLA6520

DIVIDER (1)						
	-111	-36	-116	-119	-00	-120
DIVIDER (2)						
	-01	-07	-107	-114	-36	-111
	-116	-106	-117	-113	-105	-110
-00	-115	-109	-112	-104		

						STRAP BUCKLE
-114	-36	-107	-07	-106	-01	
-113	-104	-117	-115	-116	-00	
-112	-111	-109				

BUCKLE						
	-105	-106	-01	-107	-07	-114
-110	-104	-116	-117	-106	-112	
-115	-111	-00	-109	ITW	MAGNET	

SIZE ADJUSTMENT					
	PLA5022	PLA5073	PLA5285	PLA5406	PLA5663
PLA5058	PLA5127-00	PLA5127	PLA5388-13	PLA5388-01	

					VISOR
PLA1213-00	PLA1213	PLA0481-18	PLA0481	PLA0083-09	
PLA0267	PLA0267-07	PLA0872A	PLA0872-113	PLA0083	



The Dial of Adjustment can be interchangeable with LED light

**TT :**

:

.


:

.


:

.


# Helmet Shape 101



**European Headform**  
An Oval shaped helmet is designed for a rider's head with a dimension which is considerably fit for Europeans.



**Generic headform**  
A generic headform helmet is designed for a rider's head with a dimension which is slightly longer front-to-back than its side-to-side measurement.



**Asian headform**  
A Round shaped helmet is designed for a rider's head with a dimension which is condierably fit for Asians.

**:**

amenable

Our testing lab is ISO 9001 certified! We have a CE mark and a 3-year warranty on our equipment!

## Our In-house Testing Lab



### Our:

Our testing lab is ISO 9001 certified, we have a CE mark and a 3-year warranty on our equipment!

# CERTIFICATE



15

15 2015年12月15日, 本公司收到国家质量监督检验检疫总局颁发的《外观设计专利证书》, 证书号为: 外观设计专利证书, 专利号为: 201530118660.6。该证书证明本公司设计的“运动头盔”外观设计专利已经获得国家知识产权局授予专利权, 依法享有专利权。特此公告。

**CUSTOMIZE FOR BRAND**



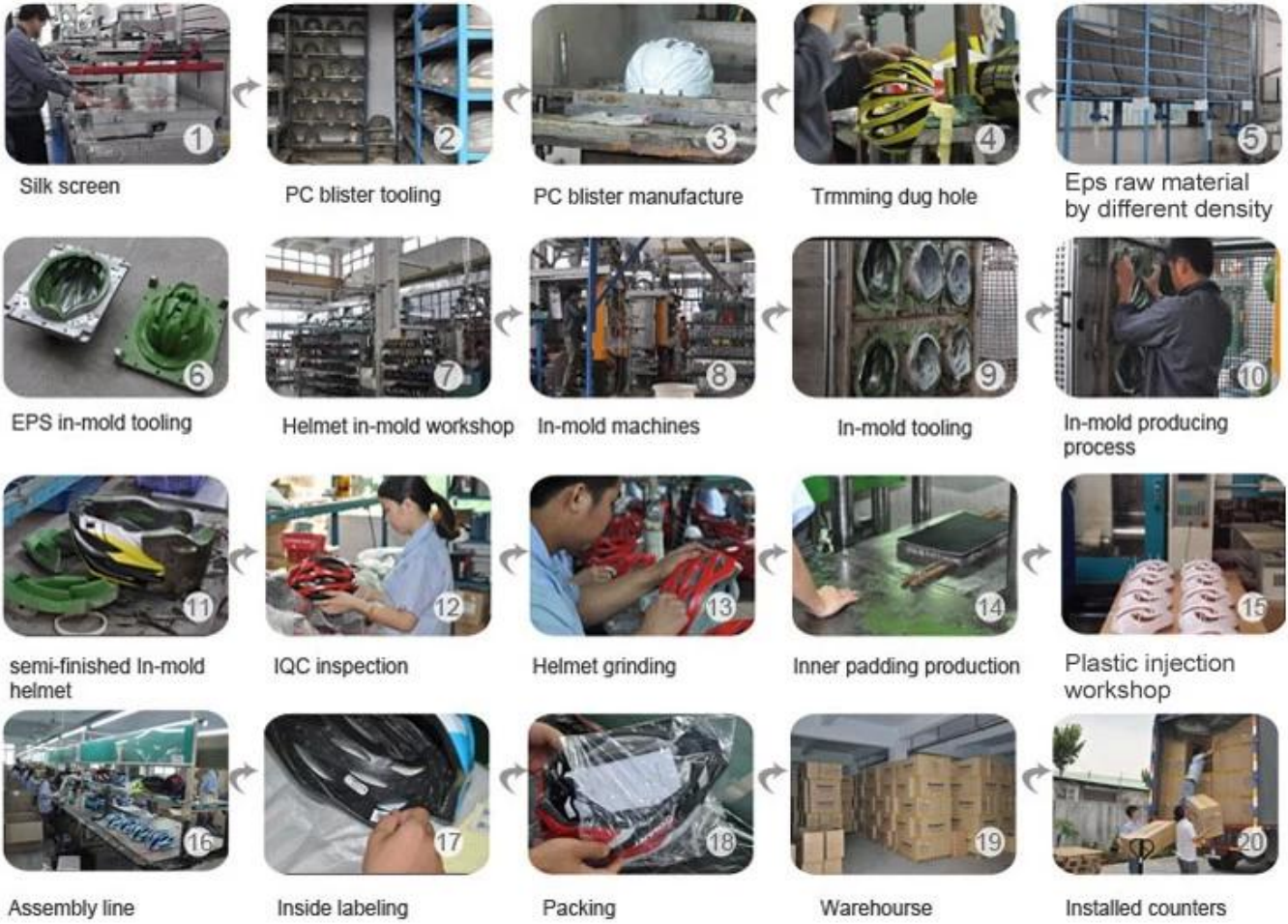
*Logo style: Dome,Metal,UV-Dart sticker,Water decal.*



**PC PC PC PC PC PC.**

PC PC → PC PC PC → PC PC PC → EPS PC PC PC PC → eepsin-mold tooling. → PC in-mold PC  
→ PC PC → PC PC → PC PC PC → PC PC PC PC PC PC → IQC PC → PC PC → PC PC PC → PC PC PC PC → PC PC → PC PC  
→ PC → PC → PC PC.

# Production Procedure



## 品質管理 :

品質管理とは、製品の品質を一定水準に保つこと、および品質向上を図ることです。品質管理の目的は、製品の品質を一定水準に保つこと、および品質向上を図ることです。品質管理の目的は、製品の品質を一定水準に保つこと、および品質向上を図ることです。

# SHIPPING

