

□□ □□ □, □□ □□ □□ □□ □□ □□ □□ □□ □□



□□ □□ □□ □□:

1. □□ □□ □□ 215 g, □□□ □□□ □□□
2. □□ □□: □□□ □ □□ □□, □□ □□□ □□ □□ □ □,
3. □□□ PC □□ □□ □□□ □□ □ □ □□.
4. □□□ □□ EPS □□, □□□ □□, □□ □□, □□□□ □□□ □□ □□□.
5. □□ □□ □□ □□, □ □□ □ □□ □□ □, □ □□.
6. □□□ □□ □ □□ □□□ □□□ □□.
7. □□: CE EN1078 □□ □□□ □□ □□.

□□ □□ □□ □□:

品名	骑行头盔 AU-C03 骑行头盔
材质	EPS 泡沫 & PC 壳
认证	CE EN1078
重量	13 克
颜色	Pantone, 红色
尺码/规格	S (47-52 CM), M (48-56 CM):
重量	215 g
包装	7 个
MOQ	300pcs
包装方式	PP 泡沫 + 泡沫内衬 + mastercarton

骑行头盔 红色 骑行头盔:











□□ □□ □□ □□ □□ □□:

□□ **Headform:**

□□□ □□□ □□□ □□ □□ □□□ □□□ □ □ □□ □□.

□□ **headform:**

□□ headform □□□ □□□ □□ □□ □-□□ □□□-□-□□□ □□ □□□ □□□ □ □ □□ □□□□□.

□□□ **headform:**

□□□ □□□ □□ A □□ condierably □□□□ □□□ □ □ □□ □□□□□ □□.

Helmet Shape 101



European Headform

An Oval shaped helmet is designed for a rider's head with a dimension which is considerably fit for Europeans.

Generic headform

A generic headform helmet is designed for a rider's head with a dimension which is slightly longer front-to-back than its side-to-side measurement.

Asian headform

A Round shaped helmet is designed for a rider's head with a dimension which is considerably fit for Asians.

Helmet Size

Helmet size is determined by the circumference of your head. To measure your head, use a soft measuring tape and wrap it around your head, just above your eyebrows and ears. Make sure the tape is level and snug, but not too tight. The number you get is your head circumference in centimeters. Most helmets are sized in centimeters, ranging from 54 to 62. If you're used to inches, you can convert your measurement by multiplying by 2.54. For example, a head circumference of 22 inches is approximately 56 centimeters. Always refer to the manufacturer's sizing chart for the best fit.

CERTIFICATE



15

15 R & D

CUSTOMIZE FOR BRAND



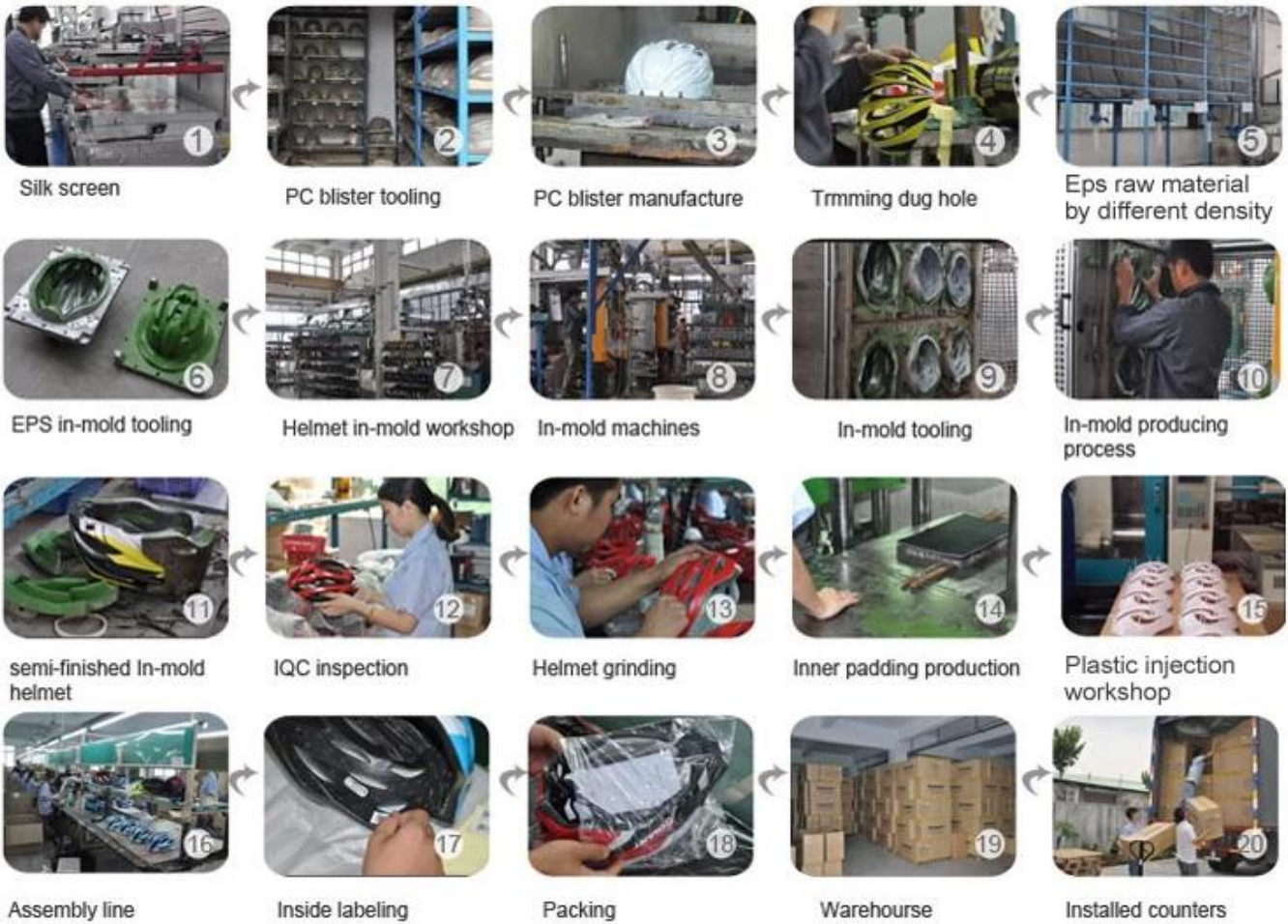
Logo style: Dome, Metal, UV-Dart sticker, Water decal.



Process Flow:

1. Client Brief → 2. Concept Design → 3. 3D Modeling → 4. Material Selection → 5. Prototype Development → 6. Final Design → 7. Production Setup → 8. Mass Production → 9. Quality Control → 10. Packaging & Shipping → 11. Customer Satisfaction.

Production Procedure



□ □□:

□ □□ □□□ □□□□.

-□□: □□□ □□ □□ □□□ □ □□ □□□□

-OEM & ODM: □□□ □□□ □ □□ OEM □ ODM □□□□ □□□ □ □□□□

-R & D □: □□□ □□ □ □ □□ □□ □□□

-□□: □□□ □□ □□□ □□□ □□ □□ □□□ □□ □□

-□□: □□□□□ □□ □□ □□ □□

-□□□: □□ □ □□ □ □□□, □□□ □□ □□□



QUALITY

With strict quality management system and first-class products



OEM&ODM

We can provide OEM and ODM service for customers



R&D TEAM

With professional and strong technical development team



PRICE

We have our own production line, to reduce the price to a minimum



PATENT

We constantly introduce patented technology products



SERVICE

Perfect after-sales service, so customer satisfaction

CONTACT:

Our products, our quality, our service, our price, our patent! We are a professional OEM & ODM manufacturer of various types of products! We have our own production line, so we can reduce the price to a minimum! We have a professional R&D team, so we can introduce patented technology products! We have a perfect after-sales service, so customer satisfaction!

SHIPPING

