

Product Display



Five color ways



產品特色：

1. 重量僅 225 g, 輕巧舒適
2. 內殼: EPS 泡棉內殼, 外殼: PC 殼
3. 內殼 PC 殼 13 點散佈式散熱孔
4. 內殼 EPS 泡棉, 內殼泡棉, 內殼泡棉, 內殼泡棉
5. 內殼泡棉, 內殼泡棉, 內殼泡棉
6. 內殼泡棉
7. 認證: CE EN1078 認證

產品規格：

產品型號	AU-C06 自行車頭盔
內殼	EPS 泡棉 & PC 殼
認證	CE EN1078
散熱孔	13 點散佈式
顏色	Pantone, 五種顏色
尺寸/重量	S: 45-50 cm; M: 50-55 cm; L: 54-58

重量	225 g
尺寸	7 吋
MOQ	300pcs
材料	PP 塑料 + 內襯 泡沫 塑料 + mastercarton

請 參 閱 圖 紙 及 樣 品 以 便 瞭 解 。











00 00 00 00 000 00 00:

00 **Headform:**

000 000 000 000 00 000 0000 000 0 0 00 00.

00 **headform:**

00 headform 000 0000 00 00 0-00 000-0-000 00 000 000 0 0 00 000000.

000 **headform:**

000 000 00 A 00 condierably 0000 000 0 0 00 00000 00.

# Helmet Shape 101



## European Headform

An Oval shaped helmet is designed for a rider's head with a dimension which is considerably fit for Europeans.

## Generic headform

A generic headform helmet is designed for a rider's head with a dimension which is slightly longer front-to-back than its side-to-side measurement.

## Asian headform

A Round shaped helmet is designed for a rider's head with a dimension which is considerably fit for Asians.

## FAQ

Q: How do I determine my helmet size? A: Measure your head circumference around the widest part, typically about 1 inch above your eyebrows. Most helmets use a size chart where 3 inches corresponds to a specific size. Always refer to the manufacturer's instructions for the most accurate fit.

## Our In-house Testing Lab



Our testing lab is equipped with advanced equipment and facilities, ensuring compliance with ISO9001, CE, and other international standards.



# CERTIFICATE



CCC CCC CCC:

CCC CCC CCC CCC CCC CCC CCC CCC 15 CCC CCC CCC CCC. CCC CCC R & D CCC CCC, CCC CCC CCC CCC CCC CCC CCC CCC CCC CCC CCC CCC CCC CCC CCC CCC.

# CUSTOMIZE FOR BRAND



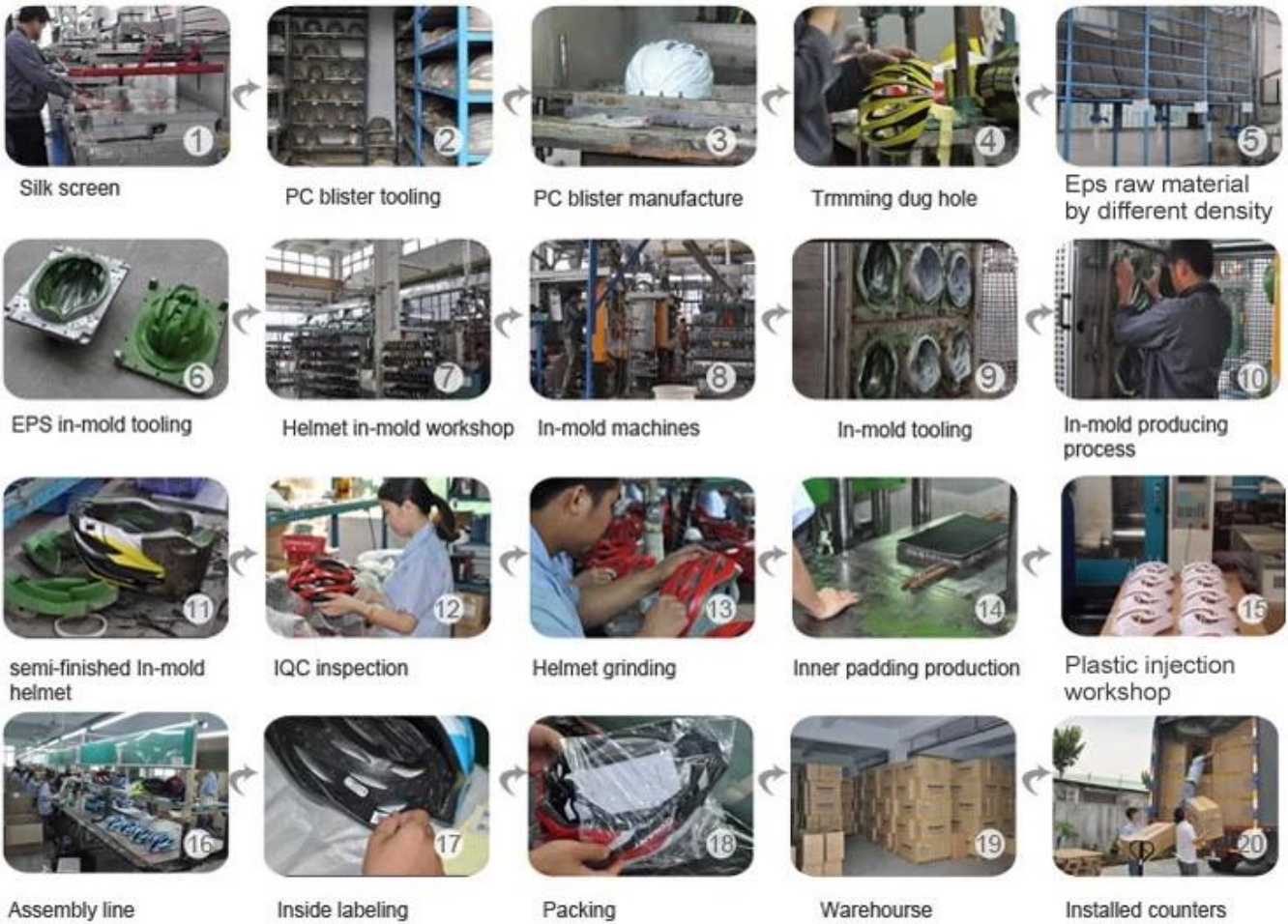
Logo style: Dome, Metal, UV-Dart sticker, Water decal.



## PC 壳 定制 流程:

PC 壳定制 → PC 壳开模 → PC 壳注塑 → 壳体打磨 → 壳体装配 EPS 泡棉 → EPS 泡棉切割 → 壳体喷漆 → 壳体装配 → 壳体质检 → 壳体包装 → IQC 检验 → 出货 → 客户收货 → 售后支持 → 壳体回收 → 壳体再利用 → 壳体销毁

# Production Procedure



□ □□:

□ □□ □□□ □□□□.

-□□: □□□ □□ □□ □□□ □ □□ □□□□

-OEM & ODM: □□□ □□□ □ □□ OEM □ ODM □□□□ □□□ □ □□□□

-R & D □: □□□ □□ □ □□ □□ □□□

-□□: □□□ □□ □□□ □□□ □□ □□ □□□ □□ □□

-□□: □□□□□ □□ □□ □□ □□

-□□□: □□ □ □□ □ □□□, □□□□ □□ □□□



## QUALITY

With strict quality management system and first-class products



## OEM&ODM

We can provide OEM and ODM service for customers



## R&D TEAM

With professional and strong technical development team



## PRICE

We have our own production line, to reduce the price to a minimum



## PATENT

We constantly introduce patented technology products



## SERVICE

Perfect after-sales service, so customer satisfaction

## CONTACT:

Our products, our quality, our service, our price, our patent! We are a professional OEM & ODM manufacturer of various types of products! We have our own production line, so we can reduce the price to a minimum! We have a professional R&D team, so we can constantly introduce patented technology products! We have a perfect after-sales service, so customer satisfaction!

# SHIPPING

