

13 AU-C03



1. 215 g

- 1. 215 g
- 2. PC
- 3. EPS
- 4. CE EN1078

2. 215 g

品名	头盔 AU-C03 头盔
材质	EPS 泡沫 & PC
认证	CE EN1078
重量	13 克
颜色	Pantone, 颜色
尺寸/规格	S (47-52 CM), M (48-56 CM):
重量	215 g
数量	7
MOQ	300pcs
包装	PP 泡沫 + 泡沫 泡沫 泡沫 + mastercarton

头盔 头盔 头盔 头盔 头盔 头盔:











□□ □□ □□ □□ □□ □□:

□□ **Headform:**

□□□ □□□ □□□ □□ □□ □□□ □□□ □ □ □□ □□.

□□ **headform:**

□□ headform □□□ □□□ □□ □□ □-□□ □□□-□-□□□ □□ □□□ □□□ □ □ □□ □□□□□.

□□□ **headform:**

□□□ □□□ □□ A □□ condierably □ □□□ □□□ □ □ □□ □□□□□ □□.

# Helmet Shape 101



## European Headform

An Oval shaped helmet is designed for a rider's head with a dimension which is considerably fit for Europeans.

## Generic headform

A generic headform helmet is designed for a rider's head with a dimension which is slightly longer front-to-back than its side-to-side measurement.

## Asian headform

A Round shaped helmet is designed for a rider's head with a dimension which is condierably fit for Asians.

## 如何选择合适的头盔：

选择合适的头盔非常重要，因为它可以保护您的头部安全。在购买时，请务必选择符合您头型尺寸的头盔。亚洲人的头型通常较圆，而欧洲人的头型则较扁。选择合适的头盔尺寸和形状，可以确保您在骑行时的舒适性和安全性。请务必在购买前试戴，以确保头盔能完美贴合您的头部。选择合适的头盔，让您的骑行之旅更加安心。





# CERTIFICATE



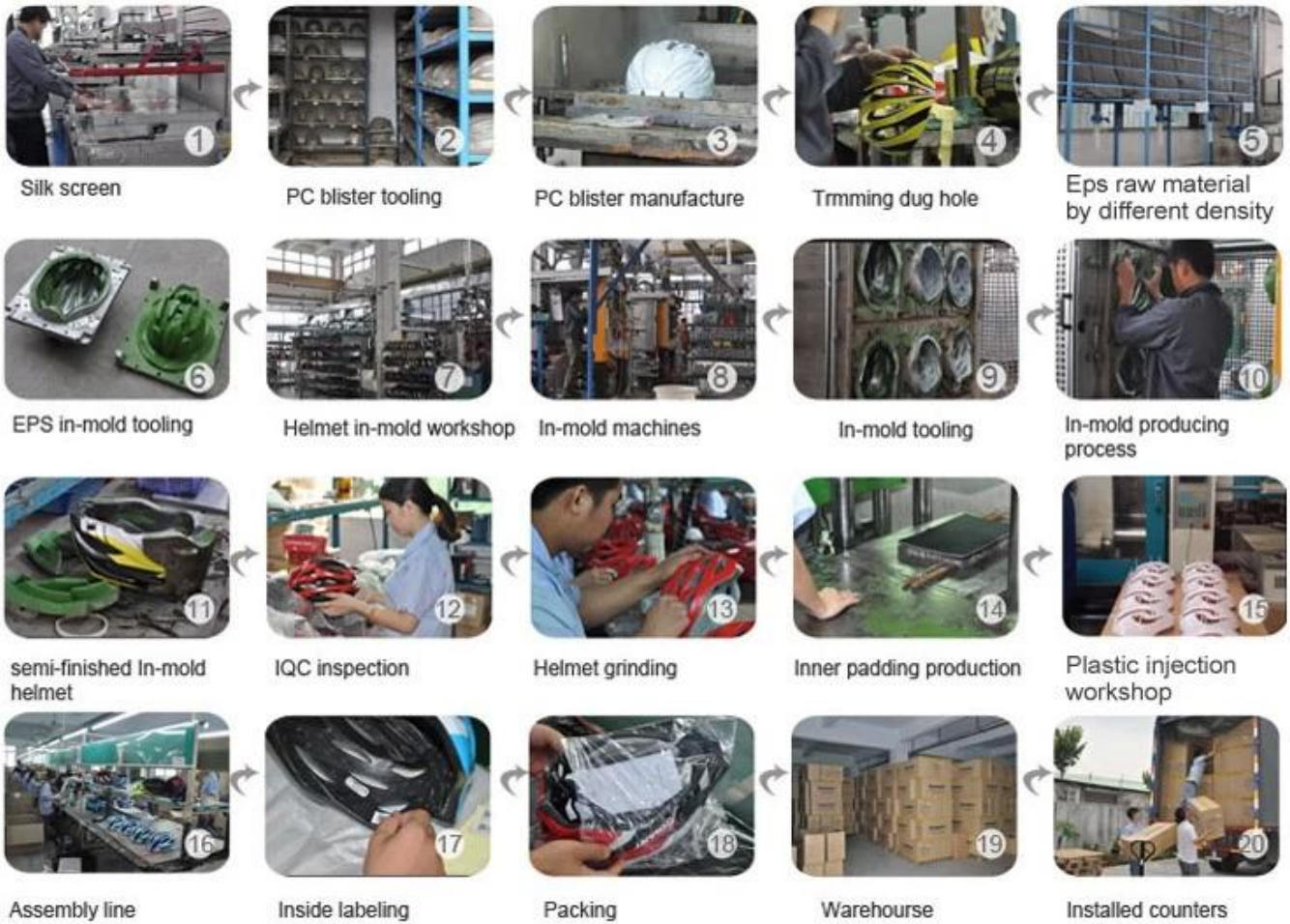
## 认证证书:

公司通过了 ISO 9001:2008 质量管理体系认证，认证范围包括 R & D 和生产。此外，公司还通过了 CE 认证，符合欧盟指令 89/686/EEC 的要求。所有产品均符合相关标准，确保了产品的质量和安全性。





# Production Procedure



□ □□:

□ □□ □□□ □□□□.

-□□: □□□ □□ □□ □□□ □ □□ □□□□

-OEM & ODM: □□□ □□□ □ □□ OEM □ ODM □□□□ □□□ □ □□□□

-R & D □: □□□ □□ □ □ □□ □□ □□□

-□□: □□□ □□ □□□ □□□ □□ □□ □□□ □□ □□

-□□: □□□□□ □□ □□ □□ □□

-□□□: □□ □ □□ □ □□□, □□□ □□ □□□



### QUALITY

With strict quality management system and first-class products



### OEM&ODM

We can provide OEM and ODM service for customers



### R&D TEAM

With professional and strong technical development team



### PRICE

We have our own production line, to reduce the price to a minimum



### PATENT

We constantly introduce patented technology products



### SERVICE

Perfect after-sales service, so customer satisfaction

## 公司优势:

我们拥有专业的研发团队，拥有自主知识产权，产品远销全球！我们拥有完善的质量管理体系，产品质量稳定可靠！我们拥有自己的生产线，可以为客户提供OEM & ODM服务，价格低廉，交货及时！我们拥有专业的售后服务团队，可以为客户提供完美的售后服务，让客户满意！

### PAYMENT

- We accept T/T ,Western Union or Paypal before production
- If buyers have any problems about payment , please contact us ASAP



### SHIPPING

- 3-15 working days since payment receipt (based on actual quantity)
- Tracking No. will be sent to you after delivery . And you will get every important shipping status by email.

