

## **Newest Strong Capabilities On All Kinds Of Helmet, EPS+PC+ABS Snowboard Helmet**

Item name	<a href="#">2020 Newest Strong Capabilities On All Kinds Of Helmet, EPS+PC+ABS Snowboard Helmet</a>
Model No.	AU-S07
External material	EPS+PC+ABS
Inner material	Hight Density EPS(expanded polystyrene)
Technology	PC+EPS in mold + ABS hard shell
Helmet Certification	CE EN 1077
Size/Head circumference	S: 52-56cm M: 56-58cm
Weight	550g
Color	PANTONE
Sample time	3-7 day
MOQ of OEM	300 PCS
Packing detail	1.PP bag, PE bag, Blister card, color box and custom-design is welcomed.
	2. Carton packing outside

### **The Advantages of Snowboard Helmet #AU-S07**

1. It's newest 2017 design, special function and attractive appearance.
2. Revolutionary hidden design strap fixed  
In-mold bolt & nut combination forges 100% firm strap holder, outside crystal sticker which can add logo contributes to an unique appearance.
3. INNOVATIVE AIR CONTROL TECHNOLOGY  
Unlike the traditional top switch, rear positioned switch greatly reduces the wind resistance & avoids the wind noise.
4. SEAMLESS DOUBLE-LAYER VENT DESIGN  
Visual impact shell design with slip vent covers, reveal exquisite workmanship & unlock scientific features.
5. EMBEDDED "T" SHAPE GOGGLE LOCK  
Soft rubber mated with fixed hook, which will anchor the goggle strap in place & secure the goggle mount properly.
6. Durable Single-handed release ITW buckle  
Detachable&Washable breathable mesh chin pads.
7. Anti-allergenic Coolmax breathable mesh inner pads  
The front pads can be foldable for better ventilation performance.
8. Hybrid plastic & soft rubber Anti-slip rotating dial  
Whole adjustment system wrapped with water-proof soft fabric.

9. Super Cool Five row Air-flow Channels  
Super Excellent ventilation performance



### **REVOLUTIONARY HIDDEN DESIGN STRAP FIXED**

In-mold bolt & nut combination forges 100% firm strap holder, outside crystal sticker which can add logo contributes to an unique appearance.



## **INNOVATIVE AIR CONTROL TECHNOLOGY**

---

Unlike the traditional top switch, rear positioned switch greatly reduces the wind resistance & avoids the wind noise.





## **SEAMLESS DOUBLE-LAYER VENT DESIGN**

---

Visual impact shell design with slip vent covers, reveal exquisite workmanship & unlock scientific features.

---



## **EMBEDDED "T" SHAPE GOGGLE LOCK**

Soft rubber mated with fixed hook, which will anchor the goggle strap in place & secure the goggle mount properly.





## **DURABLE SINGLE-HANDED RELEASE ITW BUCKLE**

---

Detachable&Washable breathable mesh  
chin pads.



## **ANTI-ALLERGENIC COOLMAX BREATHABLE MESH INNER PADS**

The front pads can be foldable for better ventilation performance.



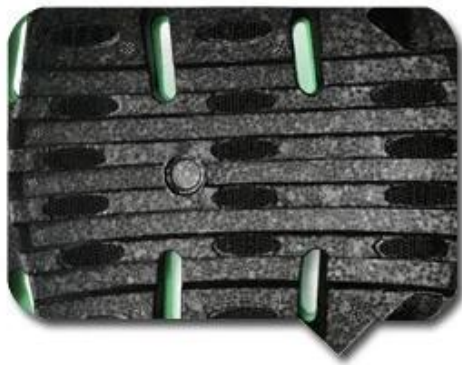




## **HYBRID PLASTIC & SOFT RUBBER ANTI-SLIP ROTATING DIAL**

Whole adjustment system wrapped  
with water-proof soft fabric.





### **SUPER COOL FIVE ROW AIR-FLOW CHANNELS**

Super Excellent ventilation performance.



## **The knowledge of snowboard helmet #AU-S07:**

### **European Headform:**

An Oval shaped helmet is designed for a rider's head with a dimension which is considerably fit for Europeans.

### **Generic headform:**

A generic headform helmet is designed for a rider's head with a dimension which is slightly longer front-to-back than its side-to-side measurement.

### **Asian headform:**

A Round shaped helmet is designed for a rider's head with a dimension which is considerably fit for Asians.

# Helmet Shape 101



## European Headform

An Oval shaped helmet is designed for a rider's head with a dimension which is considerably fit for Europeans.

## Generic headform

A generic headform helmet is designed for a rider's head with a dimension which is slightly longer front-to-back than its side-to-side measurement.

## Asian headform

A Round shaped helmet is designed for a rider's head with a dimension which is considerably fit for Asians.

## Our Test lab:

In order to manufacture quality helmets, we learn not only from the design theory, but also make progress from testing result! That's why our factory equipped with professional testing lab to ensure every design is practical & amenable! Our testing standard is more strict than the related certificate requirements, that's why we can promise the model that we provide can definitely pass the corresponding test by third-party!

## Our In-house Testing Lab



## Certification:

Below is our certificate :we have ISO9001 ,letters patent ,CE documents ,and we have our own lab to make sure every our product can meet the testing requirements



## 1



Our in-house design facility coupled with our creative Account team enables us to create innovative helmets ideally suited to our clients target market - the company combines creativity and sourcing in a unique partnership to bring the best to any sports campaign.

## CUSTOMIZE FOR BRAND



*Logo style: Dome, Metal, UV-Dart sticker, Water decal..*



## The factory pictures:

The helmet production procedure is as below:

silk screen → PC blister tooling → PC blister manufacture → Trimming dug hole → EPS raw material by different density → EPS in-mold tooling → helmet in-mold workshop → in-mold machines → in-mold tooling → in-mold producing process → semi-finished in-mold helmet → IQC inspection → helmet grinding → inner padding production → plastic injection workshop → assembly line → inside labeling → packing → warehouse → installed counters.

## Production Procedure



Silk screen



PC blister tooling



PC blister manufacture



Trimming dug hole



Eps raw material  
by different density



EPS in-mold tooling



Helmet in-mold workshop



In-mold machines



In-mold tooling



In-mold producing  
process



semi-finished In-mold  
helmet



IQC inspection



Helmet grinding



Inner padding production



Plastic injection  
workshop



Assembly line



Inside labeling



Packing



Warehouse



Installed counters

## The delivery express:

International express, air freight & sea transportation are all can be well arranged here! You can pick every possible transportation that you want & we will do our best to assist you! We have already built a long-term relationship with different shipping companies & shipping agent, all our efforts aim at providing you the best shipping experience! Choose us, it will be easy to keep the helmets safe all the time!



## SHIPPING

