

# ASTM CE Figure Skating Helmet Speed Ice Skating Helmet AU-L001



## Product specifications ice skating helmets:

Item	Content
1 the name of the product	skate helmets
2 model number	AU-L001 skating helmets
3. the material	PC + EPS
4. color	Each pantone color
5. the size of the	L (56-61 CM)
6. logo	sticker printing, watermark, heat transfer, etc.
7. MIN	300 pcss

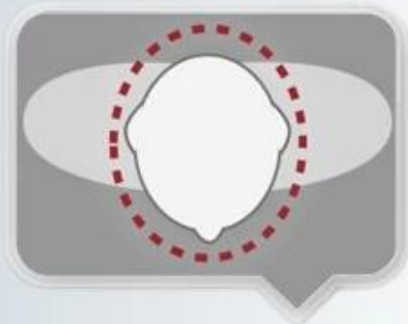
8. the Packate conditions	PP bag, color palette + 12 tools wholesale packs/ctn
9. the price term	REMOTE CONTROL
10. means of transport	By sea or by air express
11. payment	Paypal, T/T, Western Union
12. the sample time	4-7 days
13. production time	45 days





## **VENTILATION SYSTEM**

Small vents design, it can keep warm but with the aerodynamic efficiency.



## **GETTING THE RIGHT FIT**

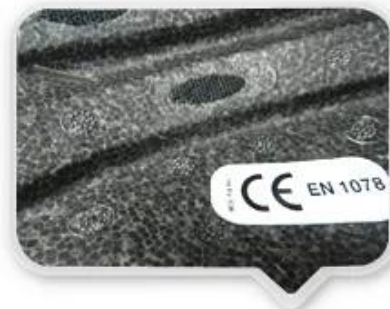
The headform was made according to ISO/DIS 6220 standard, and keeps 90% fitting rate.





### **SOFT WASHABLE PADS**

Ergonomic interior padding for comfort and durability



### **HIGH DENSITY EPS FOAM**

Impact-absorbing material, offering great protection on our head.

## **The head circumference knowledge of ski helmets canada:**

### **European Headform:**

An Oval shaped helmet is designed for a rider's head with a dimension which is considerably fit for Europeans.

### **Generic headform:**

A generic headform helmet is designed for a rider's head with a dimension which is slightly longer front-to-

back than its side-to-side measurement.

### **Asian headform:**

A Round shaped helmet is designed for a rider's head with a dimension which is considerably fit for Asians.

# Helmet Shape 101



### **European Headform**

An Oval shaped helmet is designed for a rider's head with a dimension which is considerably fit for Europeans.

### **Generic headform**

A generic headform helmet is designed for a rider's head with a dimension which is slightly longer front-to-back than its side-to-side measurement.

### **Asian headform**

A Round shaped helmet is designed for a rider's head with a dimension which is considerably fit for Asians.

## **Our Test lab:**

The machines for different tests □ resistant, retention system, lateral deformation etc...□ in our In-house testing lab are totally the same with the testing organization, we will strictly control the helmet quality before delivery.



## Our In-house Testing Lab



### Certification:

Below is our certificate :we have ISO9001 ,letters patent ,CE documents ,and we have our own lab to make sure every our product can meet the testing requirements

# CERTIFICATE



## Manufacturer

Aurora Sports is a helmet manufacturer, with more than 15 years experience in producing all types of helmets. In-house design and R&D teams with established experience, allows Aurora Sports to quickly answer to demanding requirements and create from scratch whole programs and collections with rigorous quality standards.

## Design & Creativity

Our in-house design facility coupled with our creative Account team enables us to create innovative helmets ideally suited to our clients target market - the company combines creativity and sourcing in a unique partnership to bring the best to any sports campaign.

## CUSTOMIZE FOR BRAND



*Logo style: Dome, Metal, UV-Dart sticker, Water decal..*



## The factory pictures:

The helmet production procedure is as below:

silk screen → PC blister tooling → PC blister manufacture → Trimming dug hole → EPS raw material by different density → EPS in-mold tooling → helmet in-mold workshop → in-mold machines → in-mold tooling → in-mold producing process → semi-finished in-mold helmet → IQC inspection → helmet grinding → inner padding production → plastic injection workshop → assembly line → inside labeling → packing → warehouse → installed counters.



## Production Procedure



Silk screen



PC blister tooling



PC blister manufacture



Trimming dug hole



Eps raw material  
by different density



EPS in-mold tooling



Helmet in-mold workshop



In-mold machines



In-mold tooling



In-mold producing  
process



semi-finished In-mold  
helmet



IQC inspection



Helmet grinding



Inner padding production



Plastic injection  
workshop



Assembly line



Inside labeling



Packing



Warehouse



Installed counters

## The delivery express:

We provide a wide range of payment terms. You can choose the best method to fulfill the payment. In order to improve the shipping efficiency & reduce the cost, we have built a long relationship with international shipping companies & big shipping agents. According to your helmet order quantity & shipping requirements, we can provide you the best suggestion & assistance. Make every step with us secure & satisfied!

## SHIPPING

