

## New awesome custom VG1/CE horse racing helmet Equestrian

Description of the elegant horse racing helmet AU-H07:

1. VG1 verified protection
2. Anti-scratch, high-impact ABS shell
3. High shock absorption black EPS
4. Removable and washable one-piece lining
5. Patent functional retention system
6. Elegant & slim design

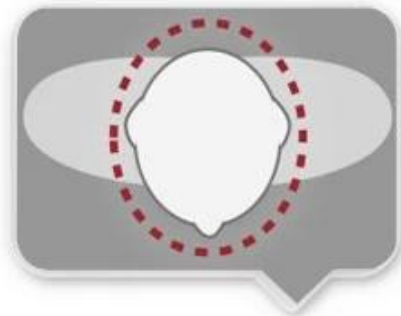
Specification of the western riding helmet:

Model No.	AU-H07
Material	High-impact engineering ABS,High-Density USA Polysource EPS(expanded polystyrene)
Surface	Matt/ Glossy/ Microfiber suede/ Glitter
Certification	CE VG1
Size/Head the perimeter of the	XXS-S(51-55cm); S-M(55-57cm); M-L(57-59cm);L-XL(59-61cm)
Lining	One-piece,Removable and can be washed in the washing machine lining
The color of the	PANTONE
Sample time	3-7 Working day
MOQ	520PCS
Packaging details	Internal package: about cloth bag and about box
	External package: 9 PCs/carton Carton Size: * 32 * 53.5 67.5 CM

**Detail photos of the elegant horse riding helmet AU-H07:**



**AU-H07**



### **INDIVIDUAL FIT HEAD FORM**

A long oval shaped head form is designed for a rider's head with a dimension which is considerably fit for Europeans.



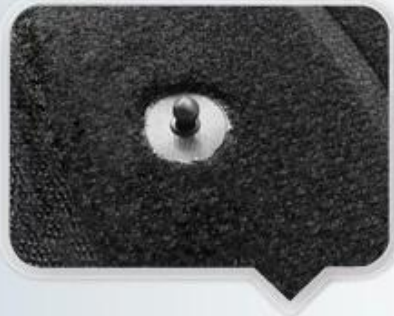
## UNRIVALLED ADJUSTMENT FOR OPTIMUM COMFORT

Progressive adjusting system allows the helmet to perfectly and user-friendly fit on the rider's head, guaranteeing the crucial advantage in terms of safety and wearer comfort with 3 functional performance.



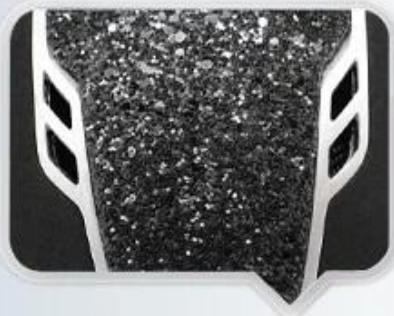
## FRIENDLY DESIGN FOR WOMEN PONYTAIL

Considerate rear space ensures your braid, rope or bun hairdos look good with a helmet, keep hair from slipping and getting in your face while you're riding and allow your hairstyle fit snugly under helmet. It still looks good when the helmet comes off.



## ONE PIECE ANTIBACTERIAL INNER PADDING

Comfortable and breathable velvet foam padding integrated with air mesh layer, ensures a better moisture wicking and sweat releasing effect. Removable and washable design lead to maximum comfort and hygiene.



## ADVANCED MASS VENTILATION SYSTEM

Aerodynamic ventilation channels provide high standards of cooling airflow, taking away the hot air of the inner fabrics to improve the rider's physiological comfort.







## UTILITY SUN PROTECTION

Novelty designed to provide adequate sun protection for the rider, the wide peak protects the skin against weather damage, while ensuring maximum visibility. Engineering ABS injection peak is assured from any deformation.









## **Packaging information**

Items per carton: 9 PCs/carton

Size of packaging: carton size: 67 \* \* 31.5 52.5 CM

Gross weight: 4.80 kg

Type of packing: 1pc/PP bag with color box, 9 DC on Brown cardboard

## **Knowledge of the head circumference identification of the sleek helmets:**

### **European headform:**

Oval-shaped helmet is designed for riders head with a dimension which is very fit for Europeans.

### **General of the headform:**

Generic block helmet is designed for riders head with a dimension which is slightly longer than its front rear measurement on the side.

### **Asian headform:**

And round in the shape of the helmet is designed for riders head with dimension, that is considerably suitable for Asians.



## **Our test lab:**

Even if we consider all the necessary elements to increase the body structure in design, but still we use professional equipment to control all aspects of our product! Our advanced internal test laboratory was built according to EN1078, EN397, EN12492, EN1384, VG1 CPSC, test specifications, etc. Before our serial



production or send it to a third-party organization test, check the quality by yourself and make sure you are qualified!

## Our In-house Testing Lab



## Certification:

Below is our certificate: ISO9001, we have Royal patent, CE documents, and we have our own laboratory, that surely each our product can meet the requirements for testing

# CERTIFICATE / AUTHENTICATION



## The production process is the helmet as below:

Silk screen → PC Tools blister → Production of PC blister → Trimming dug a hole → Raw materials for the different density of the EPS → EPS in mold tools → the helmet in the form of workshop → in forming machines → in mold tools → the production process in the mold → semi-finished cast helmet → IQC inspection → helmet, grinding → The internal padding of the production → plastic injection workshop → the Assembly line → the Interior markings → packaging → Uk → installed counters.

## Production Procedure



Silk screen



PC blister tooling



PC blister manufacture



Trimming dug hole



Eps raw material  
by different density



EPS in-mold tooling



Helmet in-mold workshop



In-mold machines



In-mold tooling



In-mold producing  
process



semi-finished In-mold  
helmet



IQC inspection



Helmet grinding



Inner padding production



Plastic injection  
workshop



Assembly line



Inside labeling



Packing



Warehouse



Installed counters

## Why did you choose us?

-because we have many advantages

Quality: with a strict quality control and excellent products

OEM and ODM: we can provide OEM and ODM service for customers

R & D team: with a team of professional and strong technical development

Price: we have our own production line, reduce the price to a minimum

Patent: we are constantly introducing products of patented technology

Service: perfect after-sales service, so the satisfaction





### QUALITY

With strict quality management system and first-class products



### OEM&ODM

We can provide OEM and ODM service for customers



### R&D TEAM

With professional and strong technical development team



### PRICE

We have our own production line, to reduce the price to a minimum



### PATENT

We constantly introduce patented technology products



### SERVICE

Perfect after-sales service, so customer satisfaction

We have over 24 years of experience processing project that we could just your ideas with true information, what you need, let us know what you want and we'll start our hands mold for reference, once we got the final confirmation of the design, we can make a 3D scanning and then processing the formation.

# Turn your idea into a custom concrete product!



## Express delivery:

International Express, air freight & sea transport are all well after agreement here! You can select all the possible transport you want and we will do our best to help! Already we have built long-term relationships with various shipping companies and shipping agent, all our efforts focus on providing the best shipping experience! Choose us, it will be easy to maintain a safe helmet all the time!

## SHIPPING

