

Quick Details

produce description

Model No.	AU-M02 customize mountain climb helmet
Material:	PP plastic
Inner material:	PU top lining, EPS foam
External material:	ABS/PP shell
headband	PE Polythene
size Universal	51-62cm
weight	407g (ear muffs are not included)
Lamp Carrying System	External Nylon 6.6 Lamp Clips
Available Regular Colors	White, blue, lemon yellow, orange, lemon green, blue
Technology:	INJECTION
Certification:	Certified by CPSC / CE en 397 Safe and Reliable
Best Use:	climbing,mountaineering
Gender :	Unisex
Style:	Assorted colors High density helmet
Color:	PANTONE
MOQ of OEM req	2000 PCS
Sample Time	1days
Bulk lead time	Within 40 days after samples confirmed and deposit received
Packing detail	1. PP bag, PE bag, Blister helmet rock card, color box and custom-design is welcomed. 2. Carton packing outside
Payment terms	T/T,Western Union
Supply ability	600,000pcs/Month
Main markets	Europe, America, Canada
Our international quality standards:	CE EN397, CE EN12492
Our strength:	1. Full sets of Testing Certificate 2. Fast making the sample 3. Good price with first class quality 4. Durable and long time service life 5. High effect for protection 6. Delivery on time.

Pictures:







Standard Headform

We make the reference according to ISO/DIS 6220 standard, plus the user's experiences we accumulated ice climbing helmet from the market for over 22 years from different brands which we have been worked with, like LIMAR, SCOTT, SWEET, etc... In other words, all of our helmet headform can be fit more than 90% people.

Helmet Shape 101



European Headform

An Oval shaped helmet is designed for a rider's head with a dimension which is considerably fit for Europeans.

Generic headform

A generic headform helmet is designed for a rider's head with a dimension which is slightly longer front-to-back than its side-to-side measurement.

Asian headform

A Round shaped helmet is designed for a rider's head with a dimension which is considerably fit for Asians.

Our Services

We accept OEM orders for all our helmets helmet petzl production lines, including client's logos and labels. After many years of exploration and development , we are sure we can meet all your requirements:

1, customized design.

2, customized size & colors & patterns.

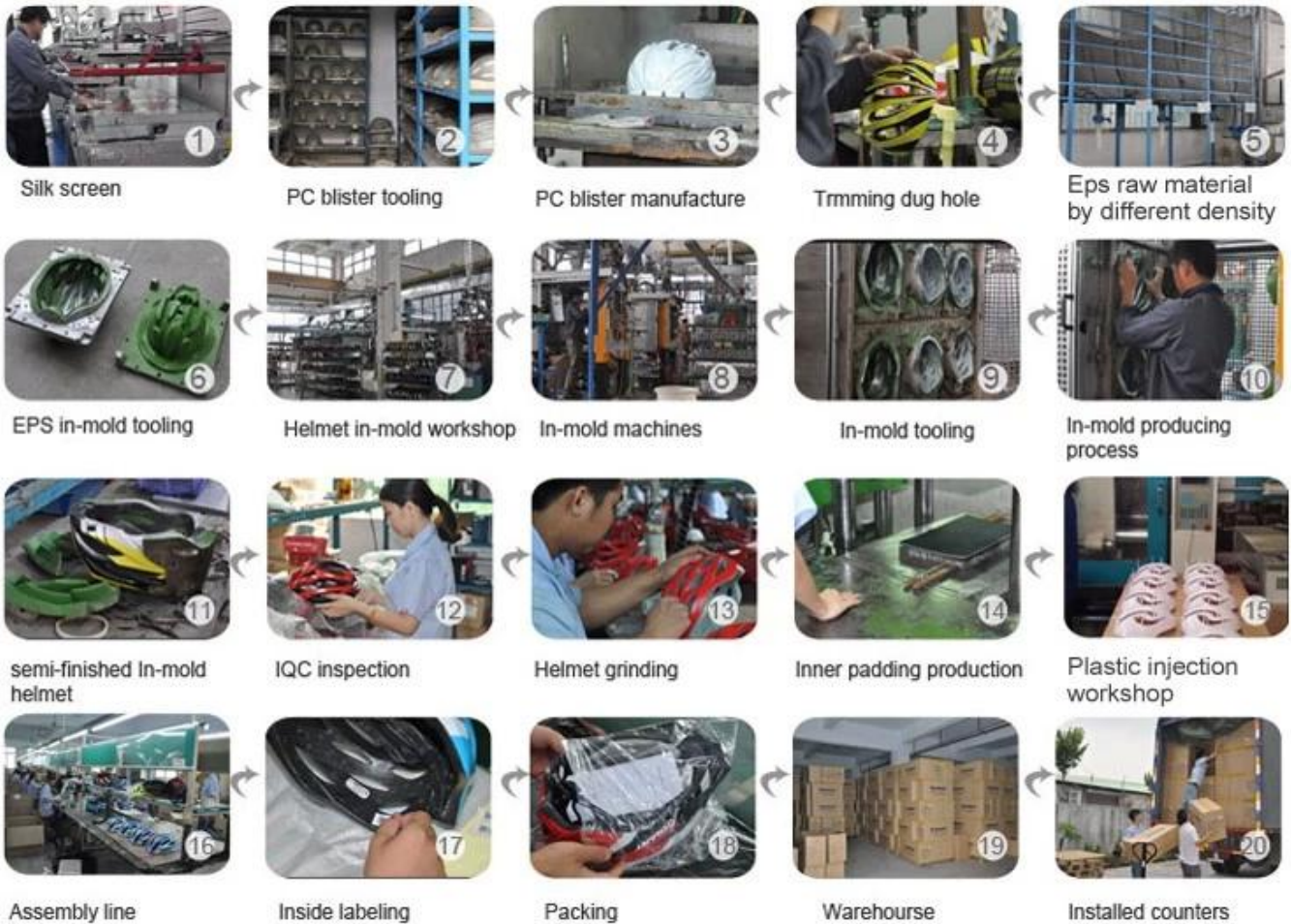
3, customized logo.

4, customized color box packaging.

5, customized stickers.

6, customized hang tag, manual, PE bag, plastic helmet rock part of buckle.

Production Procedure



FAQ

1. Do you offer OEM service ?

We accept OEM orders for all our helmets production lines, including client's logos and labels. After many years of exploration and development, we are sure we can meet all your requirements. we also have powerful R&D capabilities , just tell us your ideas, our R&D team can turn your idea into the concrete products, and help you to pass the relative testing standards, ensure the smoothly mass production, also help you to achieve profit maximization.

2. Do you offer ODM SERVICE?

Yes, To meet different customers' needs, usually we reinvest 20% of our

annual revenue for new product development. Supported by a team of 15-20 highly-qualified engineers, we design and develop new public molds every season. About 5 to 6 new models are released every month, which always become increasingly popular after launch. Inmold outdoor adult skateboard helmets

3. Can you supply with a small quantity order ?

Yes, we keep some inventory with complete color ways for cater your diversity needs, we can accept to mix the colors with a small quantity.

4. What's your Sample Policy ?

We offer charged samples according to the clients' requirements. The samples will be shipped to you within 24 hours after order confirmation (if without any logo). The samples are delivered by couriers with freight collect. Inmold outdoor adult skateboard helmets

5. How to guarantee clients interests?

We have 360 degree guarantee policy:

a. After you approved the sample, before you place an order and pay for the deposit, cordially welcome

you to pay a visit to our factories, we are sure that you will be greatly impressed by what we have and what we can do.

b. Before the delivery, we support our clients to arrange the third party to inspect the quality of the goods, If mass production is not same as approved sample, we will take the fully responsibility.

c. If we do not ship on time, we will make up your loss.

We cherish every clients, every clients can enjoy our VIP service at any

time.

6. Can you do custom packaging for my product?

Yes, Color box can be printed with your logo and your local language.

7. What's the shipment method do you offer?

A. For sample order, we use courier like DHL, UPS, TNT, FEDEX, EMS. DHL is our prefer. You can also arrange your forwarder pick the goods from us. we also ship goods via china post for Brazil and Russia customers, it is easy to clear customs.

B. For huge order, sea cargo is the best choice.

8. What is your payment method?

T/T. Paypal. Western Union.